

HRP Trade

Your independent spares specialists



PRODUCT GUIDE

Welcome to the new **HRP TRADE** product guide.

This guide is solely provided to independent merchants to help you navigate through and identify the items you require from our huge range of products.

We carry extensive gas, oil and cylinder spares profiles for all major UK manufacturers alongside our vast stocks of heating and plumbing merchandise from market leaders such as Honeywell Home, Drayton, Adey, Fernox and many more.

This guide is intentionally unpriced to allow you to share this resource with your customers without sharing any confidential pricing information.

As always live stock availability, cost and list prices (where applicable) are available 24 hours a day, 7 days a week at www.hrptrade.co.uk or you can contact our sales & technical team via your preferred method below.

**HRP TRADE IS A CHAMPION OF THE INDEPENDENT MARKET.
WE DO NOT AND WILL NOT SUPPLY DIRECTLY TO YOUR CUSTOMERS!**

LOGIN DETAILS FOR WWW.HRPTRADE.CO.UK

USERNAME: _____

PASSWORD: _____

HRP TRADE CONTACT INFORMATION:



01245 458616



ORDERS@HRPTRADE.CO.UK



ENQUIRIES@HRPTRADE.CO.UK



RETURNS@HRPTRADE.CO.UK



ACCOUNTS@HRPTRADE.CO.UK



RETURN ADDRESS:

HRP TRADE - Unit 1 Lonebarn Link, Springfield Business Park, Chelmsford, Essex, CM2 5AR

ADDITIONAL INFORMATION:

Sales office opening times are Monday to Friday 7.30am to 5.30pm

Cut-off for next working day delivery is 5.30pm Monday to Friday

Cut-off for optional Saturday day delivery is 5.30pm Friday



BOILER SPARES TECHNICAL HELPLINES



ALPHA
T: 01622 711000



ALTECNIC
T: 01785 218200



ARISTON
T: 03332 406777



BAXI
T: 03448 711540



BROAG REMEHA
T: 0345 0701055



BIASI
T: 01922 714600



ECOFLAM
T: 01905 788010



EOGB
T: 01480 477066



FERROLI
T: 0330 2050000



FIREBIRD
T: 01752 691177



GLEDHILL
T: 01253 474550



GRANT
T: 01380 736920



HAMWORTHY
T: 01202 662525



IDEAL
T: 01482 498665



INTERGAS
T: 01527 888000



JOHNSON & STARLEY
T: 01604 762881



NU-WAY
T: 01905 794331



RAVENHEAT
T: 01132 527007



SIME
T: 0345 9011114



VAILLANT
T: 0345 6022922



VALOR
T: 03448 793587



VISSMANN
T: 01952 675018



VOKERA
T: 03443 910999



WARM-FLOW
T: 01952 607750



WORCESTER
T: 0330 1239779

CONTENTS

MERCHANT PRODUCTS

ONYX	1-2
HONEYWELL HOME	3-6
DRAYTON CONTROLS	7-10
ADEY	11-12
FERNOX	13-14
SPIROTEC	15-16
HEATING PUMPS	17
BRITHTERM PUMPS	18
CALMAG	19
SALUS CONTROLS	20
DANFOSS	20
KARTELL TRVs	21
FERROLI WATER HEATERS	21
IMMERSION HEATERS FOR VENTED CYLINDERS	22
COOKERFLEX GAS HOSES	23
PRESSURE VESSELS & ACCESSORIES	24
MERCHANT ESSENTIALS	25
MUNSEN RINGS AND RUBBER LINED CLIPS	26
FLEXIBLE TAP CONNECTORS	26
ALTECNIC BRASSWARE	27-28
GLEDHILL UNVENTED CYLINDERS	29-30
ARCTIC HAYES	31-34
VAILLANT ACCESSORIES	35

UNVENTED CYLINDER SPARES

PRESSURE RELIEF VALVES	36-39
TEMPERATURE & PRESSURE RELIEF VALVES	40-41
COLD WATER INLET CONTROLS	42-45
COLD WATER INLET CONTROLS 28MM & ABOVE	46-47
IMMERSION HEATERS FOR UNVENTED CYLINDERS	48-50
THERMOSTATS	51-52
BLENDING VALVES AND AUTO BYPASS VALVES	53
AUTOMATIC AIR VENTS	54

CONTENTS

OIL BURNER SPARES

OIL NOZZLES	55-56
OIL BURNERS	57-59
OIL PUMPS & CAPACITORS	60
BURNER MOTORS	61
OIL LINES	61
RUBY RED OIL LINES	62
SOLENOID COILS & TRANSFORMERS	63
PHOTOCELLS, OIL BOWLS & FILTERS	64
CONTROL BOXES	65
FIRE VALVES	66
FANS & GASKETS	67
ELECTRODES AND LEADS	68
MISCELLANEOUS OIL SPARES	69

FRONTLINE BOILER SPARES

VAILLANT BOILER SPARES	70-73
BAXI BOILER SPARES	74-77
WORCESTER BOILER SPARES	78-81
IDEAL BOILER SPARES	82-85
GLOW-WORM BOILER SPARES	86-89

BOILERS

VAILLANT BOILERS	90-91
BAXI & POTTERTON BOILERS	92-94
WORCESTER BOSCH BOILERS	95-96
IDEAL BOILERS	97-98
GLOW-WORM BOILERS	99-100
VOKERA BOILERS	101
EHS ELECTRIC BOILERS	101

RETURNS POLICY	102-103
----------------	---------

ONYX - QUALITY & AFFORDABLE TRADE ESSENTIALS



ONYX SCALE INHIBITOR

ONYX15

ONYX 15MM ELECTROLYTIC SCALE INHIBITOR

ONYX SCALE INHIBITOR

ONYX22

ONYX 22MM ELECTROLYTIC SCALE INHIBITOR



ONYX MAGNETIC FILTER

ONYXFILTER

ONYX 22MM BRASS MAGNETIC FILTER WITH VALVES



ONYX MAGNETIC FILTER

ONYXFILTER2

ONYX 22MM BRASS MAGNETIC FILTER NO VALVES

ONYX - QUALITY & AFFORDABLE TRADE ESSENTIALS



TOWEL RAIL VALVES

TRA

ONYX TOWEL RAIL VALVES HP ANGLED (PR)



TOWEL RAIL VALVES

TRS

ONYX TOWEL RAIL VALVES HP STRAIGHT (PR)



TOWEL RAIL VALVES

TRCOR

ONYX TOWEL RAIL VALVES HP CORNER (PR)



CIRCULATING PUMP

ONYXB

ONYX 15-50/60 CIRCULATION PUMP

HONEYWELL

MOTORISED VALVES



V4043H1056/U
22MM 2 PORT ZONE VALVE



V4043H1106/U
28MM 2 PORT ZONE VALVE



V4073A1039/U
22MM 3 PORT MID POSITION VALVE



V4073A1088/U
28MM 3 PORT MID POSITION VALVE



40003916-001/U
2 PORT POWERHEAD



40003916-003/U
3 PORT POWERHEAD



ML7300A1004
SMARTFIT 3 PORT ACTUATOR

THERMOSTATS



DT90E1012
DT90E WIRED DIGITAL ROOM THERMOSTAT



DT92E1000
DT92E WIRELESS DIGITAL ROOM THERMOSTAT



Y87RF2024
WIRELESS SINGLE ZONE THERMOSTAT



T6360B1028
STANDARD ROOM THERMOSTAT



T6360B1036
STANDARD ROOM THERMOSTAT WITH NEON



T6360B1069
TAMPERPROOF ROOM THERMOSTAT



L641A1039
CYLINDER THERMOSTAT



T4360A1009
FROST THERMOSTAT



L641B1004
LOW LIMIT PIPE THERMOSTAT



L641B1012
HIGH LIMIT PIPE THERMOSTAT

MERCHANT PRODUCTS
HONEYWELL

HONEYWELL

7-DAY INSTALLER PACKS



Y609A1045-1

S-PLAN INSTALLER PACK COMES WITH 2 X V4043H1056; 1 X T6360B1028; 1 X ST9400C1000 AND 1 X L641A1039



Y609A1029-1

Y-PLAN INSTALLER PACK COMES WITH 1 X V4073A1039; 1 X T6360B1028; 1 X ST9400C1000 AND 1X L641A1039

PROGRAMMABLE THERMOSTATS



T3H110A0066

T3 HARD-WIRED PROG. THERMOSTAT



Y3H710RF0053

T3R WIRELESS PROG. THERMOSTAT



T4H110A1021

T4 HARD-WIRED PROG. THERMOSTAT



Y4H910RF4003

T4R WIRELESS PROG. THERMOSTAT

SMART/CONNECTED PRODUCTS



Y6H920RW4026

T6R-HW WIRELESS SMART THERMOSTAT WITH HOT WATER CONTROL



Y87RFC2116

CONNECTED THERMOSTAT WITH RFG100 INTERNET GATEWAY



ATP921R3100

EVOHOME WIRELESS BASE PACK C/W BUILT IN WIFI - INC. CONTROLLER; RF RELAY



HR924UK

EVOHOME 4 PACK RADIATOR CONTROLLERS



HR92UK

EVOHOME RADIATOR CONTROLLER



ATF500DHW

EVOHOME HOT WATER KIT



ATF600

EVOHOME WIFI WALL MOUNTING PACK



HCC80R

EVOHOME UNDERFLOOR HEATING CONTROLLER



ATP926G3001

EVOHOME ESSENTIALS PACK (1 X BASE UNIT 6 X HR91UK)



HR914

4 X WIRELESS TRV HR91 HEAD



HR91

WIRELESS TRV HR91 HEAD



HONEYWELL

PROGRAMMERS & TIMESWITCHES



ST9100C1006
7 DAY TIMESWITCH - 30N/OFF



ST9100S1007
SERVICE INTERVAL 24HR
TIMESWITCH - 30N/OFF



ST9400C1000
7 DAY PROGRAMMER - 30N/OFF



ST9500C1015
7 DAY 2CH HTG ONLY
PROGRAMMER - 30N/OFF



Y9120H2009
RF PACK 1 (ST9100C & DT92)



Y9420H1008
RF PACK 2 (ST9400C & DT92)



Y9420S2005
RF PACK 3 (ST9400C, DT92
& WIRELESS CYLINDER STAT)

THERMOSTATIC RADIATOR VALVES



VT15BG
10MM ANGLED TRV



VT15EG
15MM ANGLED TRV



VTL15-15A
15MM ANGLED TRV & LS PACK



VT117-15A
VALENCIA 15MM ANGLED TRV



VTL120-15A
VALENCIA 15MM ANGLED TRV
& LOCKSHIELD



VTL120-15S
VALENCIA 15MM STARIGHT
TRV & LOCKSHIELD



VT200-15A
DESIGNER ANGLED TRV



VTL200-15A
DESIGNER ANGLED TRV & LOCKSHIELD

HONEYWELL

BRASSWARE & ANCILLIARY PRODUCTS



Q309A2788
900MM THERMOCOUPLE



42002116-002
JUNCTION BOX 10-WAY



42005748 001
WIRING CENTRE



D04FM-1/2ZGC
15MM PRESSURE REDUCING VALVE WITH GAUGE



D04FM-3/4ZGC
22MM PRESSURE REDUCING VALVE WITH GAUGE



DU145-3/4B
22MM ANGLED AUTO BYPASS VALVE



DU144A1001
22MM STRAIGHT AUTO BYPASS VALVE



EA122-AB
AUTOMATIC AIR VENT



R100C-1
CO2 ALARM - 10 YEAR

GAS VALVES



V4600C1086
GAS VALVE 240V



V8600C1053
GAS VALVE 24V



VR4700E
GAS VALVE TWIN SOLENOID 240V



V4600A1023
GAS VALVE 240V



DRAYTON

STATS & WIRING

Drayton's simple-to-use RTS range features accurate electrical temperature sensors, an easy dial interface, set point locking and the ability to set range limiting stops.



RTS1

DRAYTON RTS1 ELECTRONIC ROOM STAT



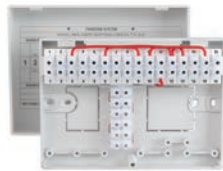
RTS8

DRAYTON RTS8 COMBI STAT



HTS3

DRAYTON HTS3 CYLINDER THERMOSTAT



LWC1

DRAYTON LWC1 WIRING CENTRE



LWC3

DRAYTON LWC3 JUNCTION BOX

LIFESTYLE PROGRAMMERS & TIMERS

The Lifestyle LP range of programmers and timeswitches have a well established reputation for quality and reliability. Now extra features make these popular products even easier to use for both installer and home-owner.



LP111

DRAYTON LP111 TIMESWITCH



LP112

DRAYTON LP112 PROGRAMMER



LP241

DRAYTON LP241 PROGRAMMER



LP522

DRAYTON LP522 PROGRAMMER



LP711

DRAYTON LP711 TIMESWITCH



LP722

DRAYTON LP722 PROGRAMMER

DRAYTON

DIGISTATS

Drayton's extensive selection of room thermostats range from the popular Digistat range - including the brand NEW Digistat Bluetooth-enabled thermostat with app control - to the simple and popular dial thermostats and wireless RF-controlled room thermostats and cylinder thermostats.



RF561DR

DRAYTON LP10RF PROGRAMMER & DIGISTAT + 3RF



RF562DR

DRAYTON LP20RF DUAL CHANNEL PROGRAMMER & DIGISTAT + RF



RF601

DRAYTON DIGISTAT + RF & SINGLE CHANNEL RECEIVER



RF700

DRAYTON DIGISTAT + 2RF AND SINGLE CHL RECEIVER



RF701

DRAYTON DIGISTAT + 3RF AND SINGLE CHL RECEIVER



13616

DIGISTAT + C RF CYLINDER



RF901

DIGISTAT SINGLE-CHANNEL RF WITH OT



RF902

DIGISTAT DUAL-CHANNEL RF



2290B

DIGISTAT BATTERY RELAY



2290M

DIGISTAT MAINS RELAY WITH OT

WISER - INTERNET CONNECTED HEATING CONTROLS

From keeping everyone warm when you're in, to controlling everything else when you're not, Wiser technology seamlessly turns your home into a smart and sustainable one. No more losing sleep on heating systems that cost the earth. No more wasted energy. Just complete room by room control from the app or with Amazon Alexa and the Google Assistant.



WT714R9K0902

WISER THERMOSTAT KIT 1



WT724R9K0902

WISER THERMOSTAT KIT 2



WT734R9K0902

WISER THERMOSTAT KIT 3



WV714R9K0902

WISER MULTI-ZONE KIT 1



WV724R9K0902

WISER MULTI-ZONE KIT 2



WV704R0A0902

RADIATOR THERMOSTAT



WN704R0S0902

ROOM THERMOSTAT



WB704H1A0902

WISER SMART PLUG



DRAYTON

MOTORISED VALVES

Used primarily in larger properties for zoning, Drayton's 2 port, diverter and mid-position valves are available in 22mm and 28mm. All models feature 'snap-on' actuators and have industry-standard wiring and dimensions.



27100

DRAYTON ZA5/679-2 22MM
2 PORT VALVE



27101

DRAYTON MA1/679-3 22MM
MID-POSITION VALVE



27205

DRAYTON ZA6/779-2 28MM
2 PORT VALVE



27206

DRAYTON MA1/779-3 28MM
MID-POSITION VALVE

TRV4 RADIATOR VALVES

The TRV4 is Class 1 rated for efficiency by the European valve manufacturers association making it one of the most energy efficient TRVs available.



TRV4

TRV4 ANGLED 15MM



TRV4TWIN

TRV4 ANGLED 15MM
WITH L/SHIELD



07 05 151

TRV4 15MM STRAIGHT



07 05 190

TRV4 15MM STRAIGHT WITH L/SHIELD



07 25 006

TRV4 INTEGRAL HEAD



07 05 174

TRV4 CHROME 15MM ANGLED
WITH L/SHIELD



07 05 175

TRV4 CHROME 15MM
STRAIGHT WITH L/SHIELD



TRV4ANTR

TRV4 ANTHRACITE 15MM
ANGLED WITH L/SHIELD



07 07 260

TRV4 ALL WHITE 15MM ANGLED
WITH L/SHIELD



07 07 007

TRV4 ALL WHITE HEAD ONLY

DRAYTON

RT212 RADIATOR VALVES

Drayton's RT212 thermostatic radiator valves provide low cost control of individual room temperatures, with liquid sensors for a faster response and chrome valves with matching accessories.



0809015
RT212 15MM ANGLED



RT212
RT212 TRV ANGLED
WITH L/SHIELD



08 09 115
RT212 15MM STRAIGHT



08 09 010
RT212 **10MM** ANGLED



08 09 099
RT212 INTEGRAL HEAD

RT414 RADIATOR VALVES

The Drayton RT414 thermostatic radiator valves provide control of individual room temperatures. With integral thermostatic sensing head and reverse flow capability, the 15mm angle valve can be flow or return mounted, vertically or horizontally. Radiator flow rate can be balanced from the TRV.



10 10 015
RT414 15MM ANGLED



10 10 260
RT414 15MM ANGLED
WITH L/SHIELD



10 10 264
RT414 15MM ANGLED With
L/SHIELD + D/O TAILPIECE

ADEY

MAGNETIC FILTERS



MC22002
MAGNACLEAN PRO1



MCM22001
MAGNACLEAN MICRO1



CP1-03-00022
MAGNACLEAN PRO2



FL1-03-01274
MAGNACLEAN MICRO2



FL1-03-01357
MAGNACLEAN PRO XP 28MM

CHEMICAL PACKS



FL1-03-01867
MAGNACLEAN MICRO1 CHEM PACK



CP1-03-00625
MAGNACLEAN PRO2 CHEM PACK

ADEY

CHEMICALS



MC1
MC1 INHIBITOR 500ML



MC3
MC3 CLEANER 500ML



MC1RAPIDEPLUS
MC1+ RAPIDE 300ML

SERVICING



CP1-03-5132
ADEY PROCHECK® TEST KIT



PK2-03-05133
ADEY PROCHECK® REFILL KIT



PK2-02-00829
PRO2/MICRO2 SERVICE PACK



SEAPKPRO
MAGNACLEAN PROFESSIONAL
SEAL PACK



SP2-01-00375-01
PRO2 LID SPANNER



BSPN1
BLACK LID SPANNER



SP2-01-01620
GREY LID SPANNER

FERNOX

TOTAL FILTERS



59256

FERNEX TF1 TOTAL FILTER 22MM



62131

FERNEX TF1 COMPACT FILTER 22MM



59257

FERNEX TF1 TOTAL FILTER 28MM

OMEGA FILTERS



62248

FERNEX BRASS OMEGA FILTER
22MM SLIP CONN



62249

FERNEX BRASS OMEGA FILTER
22MM C/W VALVES



62251

FERNEX BRASS OMEGA FILTER
28MM SLIP CONN



62252

FERNEX BRASS OMEGA FILTER
28MM C/W VALVES

SIGMA FILTERS



62414

FERNEX TF1 SIGMA FILTER
22MM SLIP SOCKET



62415

FERNEX TF1 SIGMA FILTER
22MM C/W VALVES



62417

FERNEX TF1 SIGMA FILTER
28MM C/W VALVES

FERNOX

CHEMICALS



62454

FERNOX F1 BOTTLE
265ML PROTECTOR



62455

FERNOX F3 BOTTLE
265ML CLEANER



56599

FERNOX F1 BOTTLE 500mm
PROTECTOR



56600

FERNOX F3 BOTTLE 500mm
CLEANER



56602

FERNOX F2 BOTTLE
500MM SILENCER



56603

FERNOX F4 BOTTLE
500MM LEAK SEALER



62486

FERNOX F8 BOTTLE 500ML
POWER CLEANER (NEW)



62418

FERNOX F1 EXPRESS
PROTECTOR (AEROSOL) 400ML



62420

FERNOX F3 EXPRESS CLEANER
(AEROSOL) 400ML



62421

FERNOX F2 EXPRESS SILENCER
(AEROSOL) 400ML



62422

FERNOX F4 EXPRESS LEAK
SEALER 400ML

SUNDRIES



61016

FERNOX LS-X EXTERNAL
LEAK SEALER 50ML



20437

FERNOX POWERFLOW
FLUX 100G



20436

FERNOX POWERFLOW
FLUX 350G



61024

FERNOX HAWK
WHITE 400G



61025

FERNOX HAWK
WHITE 200G



62514

FERNOX EXPRESS INHIBITOR
TEST (50 TEST STRIPS)



TF1SEALKIT

FERNOX TF1
SEAL KIT

MERCHANT PRODUCTS
FERNOX

SPIROTECH

DIRT SEPARATORS



UE022WJ
22MM DIRT SEPERATOR MB3 22MM



UE028WJ
28MM DIRT SEPERATOR MB3 28MM



UE125WJ
1 1/4" MBL DIRT SEPARATOR



UE150WJ
1 1/2" MBL DIRT SEPARATOR



UE200WJ
2" MBL DIRT SEPARATOR



UE022WHA01
MBC1 MICRO 22MM FILTER

SPIROCOMBI - DIRT & AIR SEPARATORS



UC022WJ
SPIROCOMBI MB3 22MM



UC028WJ
SPIROCOMBI MB3 28MM



UC125WJ
SPIROCOMBI MB3 1 1/4"



UC150WJ
SPIROCOMBI MB3 1 1/2"



UC200WJ
SPIROCOMBI MB3 2"



CTF075
MB3 RV2 FLUSHING ADAPTOR



TUR100
INSULATION JACKET MB3 & RV2 22MM - 28MM

SPIROTECH

AIR SEPARATORS



AB050
SPIROTOP 1/2"



UA022W
RV2 22MM DEAERATOR



UA028W
RV2 28MM DEAERATOR



UA125W
1 1/4" RVL DEAERATOR



UA150W
1 1/2" RVL DEAERATOR



UA200W
2" RVL AIR DEAERATOR

LOW LOSS HEADERS



AX100
SPIROCROSS 1" BRASS



AX125
SPIROCROSS 1 1/4" BRASS



AX150
SPIROCROSS 1 1/2" BRASS



TAX150
INSULATION JACKET AX100
AX125 AX150

HEATING PUMPS



GRUNDFOS UPS3

GRUPS3

GRUNDFOS UPS3 6MTR UNIVERSAL REPLACEMENT PUMP



INTERPART HIGH EFFICIENCY PUMP

INP0120

INTERPART HIGH EFFICIENCY 5/6M PUMP



CIRCULATING PUMP

ONYXB

ONYX 15-50/60 CIRCULATION PUMP

HIGH QUALITY PRODUCTS WITH GREAT WARRANTY PERIOD

DOMESTIC STANDARD 15-60/130

PART NUMBER: DS15



- Pump Type: Heating
- Connection Size: 1 1/2"
- Port to Port Distance: 130mm
- Speed Control: 3 Fixed Speeds Maximum
- Head: 6 Meters

DOMESTIC PRO 15-60/130

PART NUMBER: DP15



- Pump Type: Heating
- Connection Size: 1 1/2"
- Port to Port Distance: 130mm
- Speed Control: 9 Modes Maximum
- Head: 6 Meters

BRONZE EDITION 15-60/130

PART NUMBER: BR15



- Pump Type: Hot Water
- Connection Size: 1 1/2"
- Port to Port Distance: 130mm
- Speed Control: 3 Fixed Speeds Maximum
- Head: 6 Meters

SL COMMERCIAL 25-80/180

PART NUMBER: SL25



- Pump Type: Heating
- Connection Size: 1 1/2"
- Port to Port Distance: 180mm
- Speed Control: 3 Fixed Speeds Maximum
- Head: 8 Meters

G-COMBI STANDARD 15-60

PART NUMBER: G15



- Pump Type: Replacement Head
- Connection Size: 1 1/2"
- Speed Control: 3 Fixed Speeds Maximum
- Head: 6 Meters
- For Boilers Only

W-COMBI STANDARD 15-60

PART NUMBER: W15



- Pump Type: Replacement Head
- Connection Size: 1 1/2"
- Speed Control: 3 Fixed Speeds Maximum
- Head: 6 Meters
- For Boilers Only

CALMAG

MERCHANT PRODUCTS
CALMAG



HEATING PACK C

CALMAG-HF2

PACK INCLUDES: HEATING FILTER, 500ML BUILD CERT INHIBITOR, 500ML CLEANSER, FILLING LOOP AND 15MM ELECTROLYTIC SCALE INHIBITOR



CALMAG
CALMAG 15MM SCALE INHIBITOR



CALSOAKAWAY
CALMAG SOAKAWAY



CALDENSATE
CALMAG CONDENSE NEUTRALISER

SALUS



RT520RF



RT310RF



RT510RF+



MAG DEFENDER



MP200A PUMP

FULLY COMPLIANT WITH BOILER PLUS

CODE	DESCRIPTION
RT310RF	SALUS DIGITAL ROOM THERMOSTAT WITH RF RT310RF
RT510RF+	SALUS PROGRAMMABLE ROOM STAT WITH RF RT510RF+ (BOILER PLUS)
RT520RF	SALUS RT520RF THERMOSTAT (WIRELESS) BOILER PLUS COMPLIANT
RT310I	SALUS SMARTPHONE CONTROLLED PROG THERMOSTAT RT310I
IT500	SALUS IT500 HIGH DESIGN 2 CHANNEL INTERNET READY THERMOSTAT
MP200A	A-RATED 6M CIRCULATING PUMP
MD22A	SALUS MAG DEFENDER 22MM
GGPC1	SALUS RF MAIN SWITCH GGPC1



RF MAIN SWITCH



CODE	DESCRIPTION
CTHPA2	ACTUATOR FOR ZONE VALVE
CTHP22	22MM ZONE VALVE
CTHSA3	ACTUATOR FOR MID POSITION VALVE
CTHS3	22MM MID POSITION VALVE



MERCHANT PRODUCTS
SALUS & DANFOSS

KARTELL

THERMOSTATIC RADIATOR VALVES



TRVSA

15MM THERMOSTATIC RADIATOR VALVE (ANGLED)



TPLSTRVSA

15MM TRV & LOCKSHIELD TWIN PACK (ANGLED)

FERROLI



BRAVO UNDER-SINK WATER HEATER

BRAVO10L / BRAVO15L

- 10L (2KW) & 15L (2.5KW) CAPACITY • ERP COMPLIANT • RAPID RECOVERY TIME
- 2 YEAR WARRANTY • RUST-FREE TITANIUM ENAMELLED STEEL • REINFORCED ABS CASING



MINI INSTANT WATER HEATER

MINIINSTANT

- INSTANT 2 LITRE PER MIN. DELIVERY • ERP COMPLIANT • 5.5 KW • 2 YEAR WARRANTY
- RUST-FREE TITANIUM ENAMELLED STEEL • REINFORCED ABS CASING

IMMERSION HEATERS FOR OPEN VENTED CYLINDERS

INCOLOY WITH COPPER POCKET

- Incoloy sheath with copper stat pocket
- For medium to hard water areas
- Not suitable for stainless steel cylinders

CODE	ELEMENT SIZE
TIH540	11"
TIH545	14"
TIH547	18"
TIH548	23"
TIH550	27"
TIH555	30"
TIH560	36"



ALL INCOLOY

- Incoloy sheath with Incoloy stat pocket
- For medium to hard water areas
- Suitable for copper & stainless steel cylinders

CODE	ELEMENT SIZE
TIH640	11"
TIH645	14"
TIH647	18"
TIH648	23"
TIH650	27"
TIH655	30"
TIH660	36"



COPPER

- For soft water areas only
- Not suitable for stainless steel cylinders

CODE	ELEMENT SIZE
TIH505	11"
TIH510	14"
TIH515	18"
TIH520	23"
TIH525	27"
TIH530	30"
TIH535	36"



TITANIUM

- Titanium sheath with Incoloy stat pocket
- For hard to very hard water areas
- Suitable for copper & stainless steel cylinders

CODE	ELEMENT SIZE
TIH565	11"
TIH570	14"
TIH585	27"



2 1/4" BLANKING PLUG

- Includes fibre washer

CODE
IH214



DUAL SAFETY THERMOSTATS

- 15A, 240V
- Resetttable
- Safety cut out
- Approved to EN 60730-1

CODE	LENGTH
TS220	7"
TS225	11"
TS230	18"



SMART IMMERSION HEATERS

CODE	DESCRIPTION
TIHTS476	14" INCOLOY 1 3/4" IMMERSION HEATER & T-SMART
TIHTS572	14" TITANIUM 1 3/4" IMMERSION HEATER & T-SMART
TIHTS	T-SMART (IMMERSION HEATER NOT INCLUDED)



MANUFACTURED IN THE UK
COOKERFLEX
THE PROFESSIONAL DOMESTIC GAS HOSE

CATERHOSE



CODE	DESCRIPTION
CHC-12-1000	CATERHOSE 1000MM X 1/2" QUICK RELEASE
CHC-12-1500	CATERHOSE 1500MM X 1/2" QUICK RELEASE
CHC-34-1000	CATERHOSE 1000MM X 3/4" QUICK RELEASE
CHC-34-1500	CATERHOSE 1500MM X 3/4" QUICK RELEASE

COOKERFLEX™ NATURAL GAS HOSES

BAYONET



CODE	LENGTH
THN130	3FT
THN140	4FT
THN160	6FT
HFLEX	HOBFLEX

MICROPOINT



CODE	LENGTH
THN630	3FT
THN640	4FT

STABILITY CHAIN



CODE	DESCRIPTION
COOKERCHA	STABILITY CHAIN

COOKERFLEX™ EN14800 GAS HOSES

BAYONET



CODE	LENGTH
THUS1000	1M
THUS1250	1.25M

MICROPOINT



CODE	LENGTH
THUM1000	1M
THUM1250	1.25M

COOKER BAYONETS/SOCKETS



CODE	TYPE
B593	STRAIGHT
B553	ANGLED
B614	MICROPOINT

PRESSURE VESSELS & ACCESSORIES

CODE	POTABLE VESSELS
2POTABLE	2L POTABLE WATER VESSEL
5POTABLE	5L POTABLE VESSEL C/W BRACKET & STRAP
8POTABLE	8L POTABLE VESSEL C/W BRACKET & STRAP
12POTABLE	12L POTABLE VESSEL C/W BRACKET & STRAP
19POTABLE	19L POTABLE VESSEL C/W BRACKET & STRAP
24POTABLE	24L POTABLE VESSEL C/W BRACKET & STRAP
35POTABLE	35L POTABLE VESSEL C/W BRACKET & STRAP
50POTABLE	50L POTABLE VESSEL C/W FEET
80POTABLE	80L POTABLE VESSEL C/W FEET
100POTABLE	100L POTABLE VESSEL C/W FEET
200POTABLE	200L POTABLE VESSEL C/W FEET

CODE	HEATING VESSELS
5HEATING	5L HEATING VESSEL
8HEATING	8L HEATING VESSEL C/W BRACKET & STRAP
12HEATING	12L HEATING VESSEL C/W BRACKET & STRAP
18HEATING	18L HEATING VESSEL C/W BRACKET & STRAP
24HEATING	24L HEATING VESSEL C/W BRACKET & STRAP
35HEATING	35L HEATING VESSEL C/W FEET
50HEATING	50L HEATING VESSEL C/W FEET
80HEATING	80L HEATING VESSEL C/W FEET
100HEATING	100L HEATING VESSEL C/W FEET
140HEATING	140L HEATING VESSEL C/W FEET
200HEATING	200L HEATING VESSEL C/W FEET
300HEATING	300L HEATING VESSEL C/W FEET
500HEATING	500L HEATING VESSEL C/W FEET
1000HEATING	1000L HEATING VESSEL C/W FEET

CODE	POTABLE VESSELS WITH WELDED BRACKET
XVES050045	12L POTABLE VESSEL C/W WELDED BRACKET
XVES050055	18L POTABLE VESSEL C/W WELDED BRACKET
XVES050065	24L POTABLE VESSEL C/W WELDED BRACKET

CODE	ACCESSORIES
VESSBRK	BRACKET AND STRAP
BRKT240051	EXP. VESSEL BRACKET 35L & 50L (2 NEEDED PER VESSEL)
HRP0234	EXPANSION VESSEL HOSE 1M X 3/4" MXF
SSKIT	SEALED SYSTEM KIT
DTUN1522	TESLATUN DRY TRAP TUNDISH 15MM X 22MM
DTUN1532	TESLATUN DRY TRAP TUNDISH 15MM X 32 MM
EVSV	EXPANSION VESSEL SERVICE VALVE WITH DRAIN OFF
T-BAR	EXPANSION VESSEL FIXING BAR KIT
CAR19	CIMM 0.16L SHOCK ARRESTOR
15TUN	22MMX15MM PLASTIC TUNDISH
22TUN	28MMX22MM PLASTIC TUNDISH



12POTABLE



XVES050055



VESSBRK



15TUN



SSKIT



22TUN

MERCHANTS ESSENTIALS



T20-900
UNIVERSAL THERMOCOUPLE



T140-900
SUPER UNIVERSAL THERMOCOUPLE



15AAV
15MM AUTO AIR VENT



22PV
22MM PUMP VALVE GATED



28PV
28MM PUMP VALVE GATED



15ISO
15MM ISOCOCK



FILLINGLOOP
PART L COMPLIANT FILLING LOOP



SYNCHRON
SYNCHRON MOTOR



100RUBBLE
100 HEAVY DUTY RUBBLE SACKS



G4BT
4 BAR GAUGE BOTTOM CONN



G4BCK
4 BAR GAUGE BACK CONN



G6BT
6 BAR GAUGE BOTTOM CONN



G6BCK
6 BAR GAUGE BACK CONN



G10BT
10 BAR GAUGE BOTTOM CONN



G10BCK
10 BAR GAUGE BACK CONN



GREENFIBRE1/4
100 1/4" GREEN FIBRE WASHERS



GREENFIBRE3/8
100 3/8" GREEN FIBRE WASHERS



GREENFIBRE1/2
100 1/2" GREEN FIBRE WASHERS



GREENFIBRE3/4
100 3/4" GREEN FIBRE WASHERS



GREENFIBRE1
100 1" GREEN FIBRE WASHERS

BRASS MUNSEN RINGS & RUBBER LINED CLIPS

BRASS MUNSEN RINGS & BACKPLATES

CODE	DESCRIPTION	BAG QUANTITY
MR15	DIE CAST SINGLE RING CLIP 15MM	50
MR22	DIE CAST SINGLE RING CLIP 22MM	50
MR28	DIE CAST SINGLE RING CLIP 28MM	25
MR35	DIE CAST SINGLE RING CLIP 35MM	25
MR42	DIE CAST SINGLE RING CLIP 42MM	25
MR54	DIE CAST SINGLE RING CLIP 54MM	10
MP10	DIE CAST BACKPLATE MALE M10	50
FP10	DIE CAST BACKPLATE FEMALE M10	100



WE CAN ONLY ACCEPT ORDERS IN MULTIPLES OF THE BAG QUANTITIES STATED ABOVE.

RUBBER LINED CLIPS & BACKPLATES

CODE	DESCRIPTION	BAG QUANTITY
RLC1419	RUBBER LINED CLIP 14MM-19MM	LOOSE
RLC2025	RUBBER LINED CLIP 20MM-25MM	LOOSE
RLC2631	RUBBER LINED CLIP 26MM-31MM	LOOSE
RLC3236	RUBBER LINED CLIP 32MM-36MM	LOOSE
RLC3843	RUBBER LINED CLIP 38MM-43MM	LOOSE
RLC5358	RUBBER LINED CLIP 53MM-58MM	LOOSE
RLC109112	RUBBER LINED CLIP 109MM-112MM	LOOSE
RLCBPM	RUBBER LINED CLIP MALE BACKPLATE M10	LOOSE
RLCBP	RUBBER LINED CLIP FEMALE BACKPLATE M8/M10	LOOSE



FLEXIBLE TAP CONNECTORS



CODE	DESCRIPTION
15FLEX	FTC 15MM X 1/2" X 300MM
15ISO FLEX	FTC 15MM X 1/2" X 300MM WITH ISO
15FLEX500	FTC 15MM X 1/2" X 500MM
15FLEX1000	FTC 15MM X 1/2" X 1000MM
1515FLEX	FTC 15MM X 15MM X 300MM
1/21/2FLEX	FTC 1/2" X 1/2" X 300MM
153/4FLEX	FTC 15MM X 3/4" X 300MM
153/4FLEX500	FTC 15MM X 3/4" X 500MM
153/4FLEX1000	FTC 15MM X 3/4" X 1000MM
1510FLEX	FTC 15MM X 10MM MONO (PAIR)
1512FLEX	FTC 15MM X 12MM MONO (PAIR)
22FLEX	FTC 22MM X 3/4" X 300MM
22ISO FLEX	FTC 22MM X 3/4" X 300MM WITH ISO
22FLEX500	FTC 22MM X 3/4" X 500MM
22FLEX1000	FTC 22MM X 3/4" X 1000MM
3/43/4FLEX	FTC 3/4" X 3/4" X 300MM

ALTECNIC

THERMOSTATIC MIXING VALVES

CODE	DESCRIPTION
15TMV	15MM THERMOSTATIC MIXING VALVE
22TMV	22MM THERMOSTATIC MIXING VALVE
28TMV	28MM MIXCAL III THERMOSTATIC BLENDING VALVE



PRESSURE REDUCING VALVES

CODE	DESCRIPTION
15PRVGAUGE	15MM HIGH PERFORMANCE PRV C/W GAUGE
22PRVGAUGE	22MM HIGH PERFORMANCE PRV C/W GAUGE
1522PRVGAUGE	15/22MM PRV C/W GAUGE



LEVER BALL VALVES

CODE	DESCRIPTION
15LVRB	15MM RED/BLUE LEVER BALL VALVE
22LVRB	22MM RED/BLUE LEVER BALL VALVE
28LVRB	28MM RED/BLUE LEVER BALL VALVE
35LVRB	35MM RED/BLUE LEVER BALL VALVE
42LVRB	42MM RED/BLUE LEVER BALL VALVE
54LVRB	54MM RED/BLUE LEVER BALL VALVE



MANUAL RADIATOR VALVES

CODE	DESCRIPTION
15LSDOC	15MM MANUAL RADIATOR VALVE C/W DOC
15LS	15MM ANGLED MANUAL RADIATOR VALVE



AUTOMATIC BYPASS VALVES

CODE	DESCRIPTION
22ABP	22MM ANGLED AUTO BYPASS VALVE
22ABPSTR	22MM STRAIGHT AUTO BYPASS VALVE
28ABP	28MM ANGLED AUTO BYPASS VALVE
28ABPSTR	28MM STRAIGHT AUTO BYPASS VALVE



ALTECNIC

PRESSURE RELIEF VALVES - SERIES 311

CODE	DESCRIPTION
311430	1/2" F/F 3 BAR PRESSURE RELIEF VALVE
311460	1/2" F/F 6 BAR PRESSURE RELIEF VALVE
311530	3/4" F/F 3 BAR PRESSURE RELIEF VALVE
311560	3/4" F/F 6 BAR PRESSURE RELIEF VALVE



PRESSURE RELIEF VALVES - SERIES 312

CODE	DESCRIPTION
312430	1/2" M/F 3 BAR PRESSURE RELIEF VALVE
312460	1/2" M/F 6 BAR PRESSURE RELIEF VALVE



PRESSURE RELIEF VALVES - SERIES 313

CODE	DESCRIPTION
313430	1/2" F/F 3 BAR PRESSURE RELIEF VALVE C/W GAUGE
313460	1/2" F/F 6 BAR PRESSURE RELIEF VALVE C/W GAUGE
313530	3/4" F/F 3 BAR PRESSURE RELIEF VALVE C/W GAUGE
313560	3/4" F/F 6 BAR PRESSURE RELIEF VALVE C/W GAUGE



PRESSURE RELIEF VALVES - SERIES 314

CODE	DESCRIPTION
314430	1/2" M/F 3 BAR PRESSURE RELIEF VALVE C/W GAUGE
314460	1/2" M/F 6 BAR PRESSURE RELIEF VALVE C/W GAUGE



AUTOMATIC AIR VENTS

CODE	DESCRIPTION
502649	ROBOCAL 15MM AUTO AIR VENT
502430	ROBOCAL AUTOMATIC AIR VENT 3/8" M ROBOCAL AUTOMATIC AIR VENT 1/2" M
502640	ROBOCAL AUTOMATIC AIR VENT 1/2" M
502730	ROBOCAL AUTOMATIC AIR VENT WITH CHECK VALVE 3/8" M
502530	ROBOCAL AUTOMATIC AIR VENT 3/8" M WITH CHECK VALVE
502030	MINICAL AUTOMATIC AIR VENT 3/8" M
502040	MINICAL AUTOMATIC AIR VENT 1/2" M
502130	MINICAL AUTOMATIC AIR VENT WITH CHECK VALVE 3/8"



EXCLUSIVE OFFER ON DIRECT AND INDIRECT CYLINDERS TO ALL **HRP TRADE** CUSTOMERS

HOW TO ORDER

Simply log in to your **HRP TRADE** website and type in the product code for the required cylinder.



STAINLESS PLATINUM THE NEW UNVENTED INTERNAL EXPANSION HOT WATER CYLINDER FROM GLEDHILL

CODE	PLATINUM UNVENTED CYLINDERS
HRPPLTDR120	GLEDHILL PLATINUM INT EXP DIR 120 INT. EXP.
HRPPLTDR150	GLEDHILL PLATINUM INT EXP DIR 150 INT. EXP.
HRPPLTDR180	GLEDHILL PLATINUM INT EXP DIR 180 INT. EXP.
HRPPLTDR210	GLEDHILL PLATINUM INT EXP DIR 210 INT. EXP.
HRPPLTIN120	GLEDHILL PLATINUM INT EXP IND 120 INT. EXP.
HRPPLTIN150	GLEDHILL PLATINUM INT EXP IND 150 INT. EXP.
HRPPLTIN180	GLEDHILL PLATINUM INT EXP IND 180 INT. EXP.
HRPPLTIN210	GLEDHILL PLATINUM INT EXP IND 210 INT. EXP.
HRPPLTIN250	GLEDHILL PLATINUM INT EXP IND 250 INT. EXP.
HRPPLTIN300	GLEDHILL PLATINUM INT EXP IND 300 INT. EXP.

MERCHANT PRODUCTS
GLEDHILL CYLINDERS

CODE	STAINLESS ES
HRPSESINPDR090	GLEDHILL ES DIRECT UNVENTED 90 LITRE
HRPSESINPDR120	GLEDHILL ES DIRECT UNVENTED 120 LITRE
HRPSESINPDR150	GLEDHILL ES DIRECT UNVENTED 150 LITRE
HRPSESINPDR170	GLEDHILL ES DIRECT UNVENTED 170 LITRE
HRPSESINPDR200	GLEDHILL ES DIRECT UNVENTED 200 LITRE
HRPSESINPDR250	GLEDHILL ES DIRECT UNVENTED 250 LITRE
HRPSESINPIN090	GLEDHILL ES INDIRECT UNVENTED 90 LITRE
HRPSESINPIN120	GLEDHILL ES INDIRECT UNVENTED 120 LITRE
HRPSESINPIN150	GLEDHILL ES INDIRECT UNVENTED 150 LITRE
HRPSESINPIN170	GLEDHILL ES INDIRECT UNVENTED 170 LITRE
HRPSESINPIN200	GLEDHILL ES INDIRECT UNVENTED 200 LITRE
HRPSESINPIN250	GLEDHILL ES INDIRECT UNVENTED 250 LITRE
HRPSESINPIN300	GLEDHILL ES INDIRECT UNVENTED 300 LITRE





25 YEAR WARRANTY

STAINLESSLITE



CODE	STAINLESSLITE PLUS
HRPPLUDR090	STAINLESS LITE PLUS DIRECT 90
HRPPLUDR120	STAINLESS LITE PLUS DIRECT 120
HRPPLUDR150	STAINLESS LITE PLUS DIRECT 150
HRPPLUDR180	STAINLESS LITE PLUS DIRECT 180
HRPPLUDR250	STAINLESS LITE PLUS DIRECT 250
HRPPLUDR300	STAINLESS LITE PLUS DIRECT 300
HRPPLUIN090	STAINLESS LITE PLUS INDIRECT 90
HRPPLUIN120	STAINLESS LITE PLUS INDIRECT 120
HRPPLUIN150	STAINLESS LITE PLUS INDIRECT 150
HRPPLUIN180	STAINLESS LITE PLUS INDIRECT 180
HRPPLUIN210	STAINLESS LITE PLUS INDIRECT 210
HRPPLUIN250	STAINLESS LITE PLUS INDIRECT 250
HRPPLUIN300	STAINLESS LITE PLUS INDIRECT 300
HRPPLUIN400	STAINLESS LITE PLUS INDIRECT 400

CODE	STAINLESSLITE PLUS SLIMLINE
HRPPLUDR090SL	STAINLESS LITE PLUS DIRECT 90 SLIM
HRPPLUDR120SL	STAINLESS LITE PLUS DIRECT 120 SLIM
HRPPLUDR150SL	STAINLESS LITE PLUS DIRECT 150 SLIM
HRPPLUDR180SL	STAINLESS LITE PLUS DIRECT 180 SLIM
HRPPLUDR210SL	STAINLESS LITE PLUS DIRECT 210 SLIM
HRPPLUIN090SL	STAINLESS LITE PLUS INDIRECT 90 SLIM
HRPPLUIN120SL	STAINLESS LITE PLUS INDIRECT 120 SLIM
HRPPLUIN150SL	STAINLESS LITE PLUS INDIRECT 150 SLIM
HRPPLUIN180SL	STAINLESS LITE PLUS INDIRECT 180 SLIM
HRPPLUIN210SL	STAINLESS LITE PLUS INDIRECT 210 SLIM

CODE	STAINLESSLITE PRO HORIZONTAL
HRPPROIN180H	STAINLESS LITE PRO INDIRECT 180 HORIZONTAL
HRPPROIN210H	STAINLESS LITE PRO INDIRECT 210 HORIZONTAL
HRPPROIN250H	STAINLESS LITE PRO INDIRECT 250 HORIZONTAL
HRPPROIN300H	STAINLESS LITE PRO INDIRECT 300 HORIZONTAL



MERCHANT PRODUCTS
GLEDHILL CYLINDERS

ARCTIC HAYES



VPRO

VORTEX PRO GAS TORCH



VPHM1

VORTEX PREMIUM HEAT MAT 1800c



VSM1

VORTEX SOLDER MAT 1200c



662016

STANDARD PTFE



662014

GAS PTFE TAPE



ZEK1

ARCTIC SPRAY ZE PIPE FREEZE KIT - SMALL



ZEK2

ARCTIC SPRAY ZE PIPE FREEZE KIT - LARGE



ZELITE1

ARCTIC SPRAY ZE ELITE PIPE FREEZING KIT



ZE1

ARCTIC SPRAY ZE PIPE FREEZE - SMALL



ZE2

ARCTIC SPRAY ZE PIPE FREEZE - LARGE



ZEPRO

ARCTIC SPRAY ZE PROFESSIONAL KIT



ZEP1

ARCTIC SPRAY ZE PRO PIPE FREEZE



TIES200

CABLE TIES 2.5 X 200MM (PACK OF 100)

ARCTIC HAYES



333000B

"STRIKES" SMOKE MATCHES
TUB OF 100



333003

CLASSIC 3 SMOKE CARTRIDGES
PACK OF 10



333003B

CLASSIC 3 SMOKE CARTRIDGES
TUB OF 100



334003

ORANGE 3 SMOKE CARTRIDGES
PK 10



PH530

5GM ENCAP SMOKE PELLET TUB
OF 50



PH026A

ATOMISER GAS LEAK DETECTOR
FLUID 250ML



PH026

BRUSH-ON GAS LEAK DETECTOR
FLUID 250ML



PH020

GAS LEAK SPRAY 400ML



PH040

SILICONE SPRAY 400ML



665016

SILICONE GREASE 100G TUBE



665016-TUB

HAYES SILICONE GREASE
100G TUB



665017

SILICONE GREASE 500GM TUB



ZE29

ARCTIC SPRAY ZE SPRAY
DUSTER - SMALL



ZE294

ARCTIC SPRAY ZE SPRAY
DUSTER - LARGE



COA10

SLEEPSAFE CO ALARM SEALED
BATTERY 10YR



SA1

SLEEPSAFE PHOTOELECTRIC
SMOKE ALARM



PH043A

SLEEPSAFE SMOKE ALARM TESTER



PHC0520

SLEEPSAFE CARBON MONOXIDE TEST
SPR 520ML



888000

U FLOW FLOWCUP 1-5 GALLON &
4-22 LITRES



ARCTIC HAYES



664035

12" U-VIEW U-GAUGE 30MBAR



664036

24" U-VIEW U-GAUGE 60MBAR



664018

MANOMETER FLUID 60ML



664130

RADIATOR VALVE CHANGE KIT



WM1

WORK MAT 1200MM X 750MM



WM2

WORK MAT 1800MM X 850MM



WM3

WORK MAT 1800MM X 1500MM



WM4

TRADESMANS RUNNER
3200MM X 700MM



AD62822

HAYES BRONZE 12' X 9'
DUST SHEET 1.4KG



CP1

CARPET PROTECTOR
600 X 25M



662100

HAYES ABRASIVE MINI STRIPS
(10 PACK)



662102

HAYES ABRASIVE CLOTH
- 5M ROLL



WB8

STEEL WOOL PADS 0.018KG
PACK OF 8



66055

FLUX BRUSHES - TUB 25
INDIVIDUAL BRUSHES



443001

15MM U-CUT PIPE CUTTER AND
SPARE CUTTER



443002

22MM U-CUT PIPE CUTTER AND
SPARE CUTTER



443003

28MM U-CUT PIPE CUTTER AND
SPARE CUTTER



DHP1

DIGITAL HAND PUMP C/W
3MTR HOSE



664016

ECONOMY TEMPORARY CONTINUITY
BOND 8MM

ARCTIC HAYES



664040

PRESSURE TEST NIPPLES PK 3



AH61

GAS LEAK DETECTOR



AH02

STEM THERMOMETER



AHCT1

COMPACT DIGITAL THERMOMETER



FWKIT

FIBRE WASHER KIT 330PCS



TWKIT

TAP WASHER BOX



BVKIT

BALLVALVE WASHER BOX



FRWKIT

PLUMBERS FIRST AID KIT



556022

QUICK BLOW GLASS FUSE
32MM 3A (3 PACK)



556023

QUICK BLOW GLASS FUSE
32MM 1A (3 PACK)



556021

QUICK BLOW GLASS FUSE
20MM 2A (3 PACK)



556028

1" METER SEALING DISC
(PACK OF 3) BRASS



556029

3/4" METER SEALING DISC
(4 PACK) BRASS



W23

1/2IN PRESTEX WASHER
PK 5



W24

3/4IN PRESTEX WASHER
PK 5



APS100

ARCTIC ACCESS PANEL
100 - 150MM



APS150

ARCTIC ACCESS PANEL 150 - 230MM



APS200

ARCTIC ACCESS PANEL 200 - 200MM



APS300

ARCTIC ACCESS PANEL 300 - 300MM



VAILLANT



VAILLANT BOILER ACCESSORIES

CODE	DESCRIPTION
0020278309	FILTER, 22MM BOILER PROTECTION KIT
0020116882	TIMESWITCH 150
306741	VAILLANT SE 110 TIME SWITCH
0020094185	REMOTE PRESSURE RELIEF VALVE SET GB
0020059560	FITTINGS PACK, SET SERVICE VALVE



MERCHANT PRODUCTS
VAILLANT



VAILLANT STANDARD EFFICIENCY FLUING

CODE	DESCRIPTION
303807	VAILLANT SE STANDARD FLUE KIT
303800	VAILLANT SE VERTICAL FLUE KIT
303812	VAILLANT SE VERT & THERMOCOMPACT ADAPTOR
303802	VAILLANT SE ONE METRE EXTENSION
303801	VAILLANT SE HALF METRE EXTENSION
303808	VAILLANT SE 90 DEGREE BEND
303809	VAILLANT SE 45 DEGREE BEND (PAIR)



PRESSURE RELIEF VALVES



HRP0186

6 BAR PRESSURE RELIEF VALVE 3/4"
LOOSE NUT TO 1/2" BSP



HRP0237

6 BAR PRV PUSH FIT FOR MULTIBLOC



HRP0541

4.5 BAR PRESSURE RELIEF VALVE
(CIRCLIP CONNECTION)



HRP0540

6 BAR PRESSURE RELIEF VALVE
(CIRCLIP CONNECTION)



HRP0542

8 BAR PRESSURE RELIEF VALVE
(CIRCLIP CONNECTION)



HRP0236

3 BAR PVR PUSH-FIT X15MM



312430

1/2" M/F 3 BAR SAFETY
RELIEF VALVE



311430

1/2" F/F 3 BAR SAFETY
RELIEF VALVE



311530

3/4" F/F 3 BAR SAFETY
RELIEF VALVE



312460

1/2" M/F 6 BAR SAFETY RELIEF VALVE



311460

1/2" F/F 6 BAR SAFETY RELIEF VALVE



311560

3/4" F/F 6 BAR SAFETY RELIEF VALVE

PRESSURE RELIEF VALVES



313430

1/2" F/F 3 BAR SAFETY RELIEF VALVE
C/W GAUGE



313460

1/2" F/F 6 BAR SAFETY RELIEF VALVE
C/W GAUGE



313560

3/4" F/F 6 BAR SAFETY RELIEF VALVE
C/W GAUGE



313530

3/4" F/F 3 BAR SAFETY RELIEF VALVE
C/W GAUGE



314430

1/2" M/F 3 BAR SAFETY RELIEF VALVE
C/W GAUGE



314460

1/2" M/F 6 BAR SAFETY RELIEF VALVE
C/W GAUGE



HRP0187

4.5 BAR PRV (PLASTIC BODY)
LOOSE NUT 3/4"



HRP0247

6 BAR PRV (PLASTIC BODY)
LOOSE NUT 3/4"



HRP0248

8 BAR PRV (PLASTIC BODY)
LOOSE NUT 3/4"



HRP0487

5 BAR PRV (BRASS BODY)
LOOSE NUT 3/4"



HRP0385

6 BAR PRV (BRASS BODY)
LOOSE NUT 3/4"



HRP0386

8 BAR PRV (BRASS BODY)
LOOSE NUT 3/4"

UNVENTED CYLINDER SPARES
PRESSURE RELIEF VALVES

PRESSURE RELIEF VALVES



HRP0514

RWC 4.75 PRV FOR MK2 1PC CWIC.
CAPTIVE NUT NOT INCLUDED



HRP0559

RWC 6 BAR CASH ACME PRV



HRP0292

3 BAR PRV 3/4" FXF



HRP0419

3.5 BAR PRV 1/2" MXF



HRP0418

3.5 BAR PRV 3/4" MXF



HRP0417

3.5 BAR PRV 3/4" MX22MM



HRP0459

4 BAR PRV 1/2" MX15MM



HRP0464

6 BAR PRV 1/2" MX15MM



HRP0466

6 BAR PRV 1/2" FXF



HRP0400

6 BAR PRV 1/2" MXF



HRP0488

6 BAR PRV 3/4" FXF



HRP0520

8 BAR PRV 3/4" FXF



PRESSURE RELIEF VALVES



HRP0484

6 BAR 22MM 3/4" PLAIN SHANK
X 15MM PRV



HRP0388

8 BAR 22MM 3/4" PLAIN SHANK
X 15MM PRV



HRP0438

3 BAR PRV FOR MULTIBLOC
(NEW STYLE)



HRP0468

3.5 BAR PRV FOR MULTIBLOC
(NEW STYLE)



HRP0469

4 BAR PRV FOR MULTIBLOC
(NEW STYLE)



HRP0439

4.75 BAR PRV FOR MULTIBLOC
(NEW STYLE)



HRP0440

5 BAR PRV FOR MULTIBLOC
(NEW STYLE)



HRP0441

6 BAR PRV FOR MULTIBLOC
(NEW STYLE)



HRP0442

8 BAR PRV FOR MULTIBLOC
(NEW STYLE)



HRP0272

3 BAR PRV CARTRIDGE
POTABLE (BLUE)



HRP0273

3.5 BAR PRV CARTRIDGE
POTABLE (BLUE)



HRP0274

4 BAR PRV CARTRIDGE
POTABLE (BLUE)



HRP0275

4.5 BAR PRV CARTRIDGE
POTABLE (BLUE)



HRP0276

4.75 BAR PRV CARTRIDGE
POTABLE (BLUE)



HRP0277

5 BAR PRV CARTRIDGE
POTABLE (BLUE)



HRP0278

6 BAR PRV CARTRIDGE
POTABLE (BLUE)



HRP0279

7 BAR PRV CARTRIDGE
POTABLE (BLUE)



HRP0280

8 BAR PRV CARTRIDGE
POTABLE (BLUE)

TEMPERATURE & PRESSURE RELIEF VALVES



HRP0174
4 BAR 15MM X 1/2" TPRV



HRP0490
4 BAR 15MM X 3/4" TPRV



HRP0177
4 BAR 15MM X 3/4" TPRV 200MM PROBE



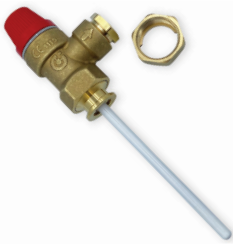
HRP0175
7 BAR 15MM X 1/2" TPRV



HRP0179
7 BAR 22MM X 3/4" TPRV



HRP0176
10 BAR 15MM X 1/2" TPRV



HRP0537
10 BAR 15MM X 3/4 FI SWIVEL
ADAPTOR TPRV



HRP0180
10 BAR 22MM X 3/4" TPRV



HRP0159
4.5 BAR 15MM X 1/2" TPRV (TPR15)



HRP0164
4.5 BAR 22MM X 3/4"
TPRV (TPR22)



HRP0160
6 BAR 15MM X 1/2" TPRV (TPR15)



HRP0161
7 BAR 15MM X 1/2" TPRV (TPR15)

TEMPERATURE & PRESSURE RELIEF VALVES



HRP0162

7 BAR 15MM X 15MM TPRV (TPR15)



HRP0477

7 BAR 15MM X 1/2" WITH 3/4 ADAPTOR TPRV (TPR15)



HRP0512

7 BAR 22MM X 3/4" TPRV 200MM PROBE (TPR22)



HRP0170

7 BAR 15MM X 1/2" TPRV 200MM PROBE (TPR15)



HRP0485

7 BAR 15MM X 15MM' TPRV 200MM PROBE (TPR15)



HRP0166

7 BAR 22MM X 3/4" TPRV (TPR22)



HRP0171

7 BAR 28MM X 1" TPRV 200MM PROBE (TPR28)



HRP0163

10 BAR 15MM X 1/2" TPRV (TPR15)



HRP0168

10 BAR 15MM X 1/2" TPRV INC. 3/4" BUSH (TPR15)



HRP0167

10 BAR 22MM X 3/4" TPR (TPR22)



HRP0538

WATTS 7 BAR 3/4" MXF TPRV

UNVENTED CYLINDER SPARES
T & P VALVES

COLD WATER INLET CONTROLS



HRP0183
CALEFFI MULTIBLOC 3/6 BAR
(NUT STYLE PRV)



HRP0184
CALEFFI MULTIBLOC 3/6 BAR
(PUSH FIT PRV)



HRP0544
CALEFFI MULTIBLOC 3/6 BAR
(CIRCLIP STYLE PRV)



HRP0546
CALEFFI MULTIBLOC 3/4.75 BAR
(CIRCLIP STYLE PRV)



HRP0517
CALEFFI MULTIBLOC 3/8 BAR
(CIRCLIP STYLE PRV)



HRP0531
CALEFFI MULTIBLOC 3.5/8 BAR
(CIRCLIP STYLE PRV)



HRP0185
CALEFFI MULTIBLOC 2/3 BAR
(PUSH FIT PRV)



HRP0454
CALEFFI MULTIBLOC 3/6 BAR (2 PIECE)



15PRVGAUGE
15MM HIGH PERFORMANCE PRESSURE
REDUCING VALVE C/W GAUGE



22PRVGAUGE
22MM HIGH PERFORMANCE PRESSURE
REDUCING VALVE C/W GAUGE



1522PRVGAUGE
15MM/22MM PRESSURE REDUCER
C/W GAUGE



HRP0287
5350 PRESSURE REDUCING VALVE
(ADJUSTABLE 1-6 BAR)

COLD WATER INLET CONTROLS



HRP0350

COLD WATER INLET CONTROL KIT (3PC)



HRP0472

COLD WATER INLET 3 PORT 3 BAR WITH
8 BAR MANIFOLD (NEW TYPE)



HRP0335

COLD WATER COMBINATION VALVE
3.5/6 BAR



HRP0349

COLD WATER INLET VALVE 3 BAR
(2 PORT) WITH 22MM ISO



HRP0351

COLD WATER COMBINATION VALVE
3 PORT 3 BAR WITH ISO



HRP0425

COLD WATER INLET 3 PORT 3 BAR WITH
6 BAR MANIFOLD (NEW TYPE)



HRP0281

COLD WATER INLET VALVE 3 BAR (2 PORT)



HRP0422

COLD WATER INLET VALVE
3.5 BAR (2 PORT)



HRP0282

COLD WATER INLET VALVE 3 BAR 3 PORT
(NEW TYPE)



HRP0342

8 BAR PRV WITH T-PIECE



HRP0265

PRESSURE RELIEF MANIFOLD
6 BAR (NEW TYPE)



HRP0266

PRESSURE RELIEF MANIFOLD
8 BAR (NEW TYPE)

UNVENTED CYLINDER SPARES
COLD WATER INLET CONTROLS

COLD WATER INLET CONTROLS



HRP0389

RWC 3/6 BAR INLET CONTROL
MULTIBLOC (2 PIECE OLD TYPE)



HRP0423

RWC 3/8 BAR INLET CONTROL
MULTIBLOC (2 PIECE OLD TYPE)



HRP0391

RWC 3.5/6 BAR INLET CONTROL
MULTIBLOC (2 PIECE OLD TYPE)



HRP0424

RWC 3.5/5 BAR INLET CONTROL
MULTIBLOC (2 PIECE OLD TYPE)



HRP0458

3/5 BAR INLET CONTROL
(2 PIECE OLD TYPE)



HRP0326

RWC 2.1 BAR PRESSURE REDUCING
VALVE (OLD TYPE)



HRP0324

RWC 3 BAR PRESSURE REDUCING VALVE
(OLD TYPE)



HRP0325

RWC 3.5 BAR PRESSURE REDUCING VALVE
(OLD TYPE)



HRP0330

RWC 6 BAR PRESSURE RELIEF
MANIFOLD (OLD TYPE)



HRP0347

RWC 8 BAR PRESSURE RELIEF MANIFOLD
(OLD TYPE)



HRP0516

RWC 5 BAR PRESSURE RELIEF MANIFOLD
(OLD TYPE)



HRP0522

RWC ADJUSTABLE PRES. RED.
VALVE 1-6 BAR 22MM

COLD WATER INLET CONTROLS



HRP0356

RWC ADJUSTABLE PRESSURE REDUCING VALVE 15MM WITH GAUGE



HRP0255

RWC 1.5/3 BAR COMPACT INLET CONTROL GROUP



HRP0256

RWC 1.8/3.5 BAR COMPACT INLET CONTROL GROUP



HRP0543

RWC 2/6 BAR COMPACT INLET CONTROL GROUP



HRP0254

RWC 2.1/8 BAR COMPACT INLET CONTROL GROUP



HRP0253

RWC 3/4.5 BAR COMPACT INLET CONTROL GROUP



HRP0428

RWC 3/4.75 BAR COMPACT INLET CONTROL GROUP



HRP0257

RWC 3/5 BAR COMPACT INLET CONTROL GROUP



HRP0252

RWC 3/6 BAR COMPACT INLET CONTROL GROUP



HRP0258

RWC 3/8 BAR COMPACT INLET CONTROL GROUP



HRP0533

RWC 3.5/6 BAR COMPACT INLET CONTROL GROUP



HRP0545

RWC 3/6 BAR CASH ACME INLET CONTROL GROUP

UNVENTED CYLINDER SPARES
COLD WATER INLET CONTROLS

COLD WATER INLET CONTROLS 28MM & ABOVE



HRP0547

CALEFFI MULTIBLOC 28MM 3/8 BAR
(CIRCLIP STYLE PRV)



HRP0548

CALEFFI MULTIBLOC 28MM 3.5/6 BAR
(CIRCLIP STYLE PRV)



HRP0550

CALEFFI MULTIBLOC 28MM 3/8 BAR
(CIRCLIP STYLE PRV)



HRP0551

CALEFFI MULTIBLOC 28MM 3.5/8 BAR
(CIRCLIP STYLE PRV)



HRP0549

6 BAR PRESSURE RELIEF VALVE
(22MM CIRCLIP STYLE PRV)



HRP0553

8 BAR PRESSURE RELIEF VALVE
(22MM CIRCLIP STYLE PRV)



HRP0554

ALTECNIC PRESCAL 1-6 BAR PRESSURE
REDUCING VALVE 3/4" MI C/W GAUGE



HRP0555

ALTECNIC PRESCAL 1-6 BAR PRESSURE
REDUCING VALVE 28MM C/W GAUGE PORT



HRP0556

ALTECNIC PRESCAL 1-6 BAR PRESSURE
REDUCING VALVE 1" MI C/W GAUGE

COLD WATER INLET CONTROLS 28MM & ABOVE



HRP0557

ALTECNIC PRESCAL 1-6 BAR PRESSURE
REDUCING VALVE 1 1/4" MI C/W GAUGE



HRP0558

ALTECNIC PRESCAL 1-6 BAR PRESSURE
REDUCING VALVE 1 1/2" MI C/W GAUGE



HRP0529

RWC 3/4.75 BAR COMPACT INLET
CONTROL GROUP 28MM



HRP0527

RWC 3.5/6 BAR COMPACT INLET
CONTROL GROUP 28MM



HRP0524

RWC 315I 1.5-6 BAR PRESSURE
REDUCING VALVE 3/4" MBSP UNION



HRP0526

RWC 315I 1.5-6 BAR PRESSURE
REDUCING VALVE 28MM COMPRESSION



HRP0498

DIAL UP ADJUSTABLE 1.5-6 BAR PRV
315I 1" MBSP UNION



HRP0499

DIAL UP ADJUSTABLE 1.5-6 BAR PRV
315I 1 1/4" MBSP UNION



HRP0500

DIAL UP ADJUSTABLE 1.5-6 BAR PRV
315I 1 1/2" MBSP UNION

UNVENTED CYLINDER SPARES
CWIC 28MM & ABOVE

IMMERSION HEATERS FOR UNVENTED CYLINDERS



HRP0192

14" 3KW INCOLOY IMMERSION HEATER
(1 3/4" THREAD)



HRP0193

11" 3KW INCOLOY IMMERSION HEATER
(1 3/4" THREAD)



HRP0194

14" 3KW TITANIUM IMMERSION HEATER
(1 3/4" THREAD)



HRP0195

11" 3KW TITANIUM IMMERSION HEATER
(1 3/4" THREAD)



HRP0246

14" 3KW INCOLOY IMMERSION
(2 1/4" THREAD FOR THERMAL STORES)



HRP0534

11" 3KW INCOLOY IMMERSION HEATER
(2 1/4" THREAD FOR THERMAL STORES)



HRP0416

16" 3KW INCOLOY IMMERSION HEATER
(1 1/2" THREAD)



HRP0539

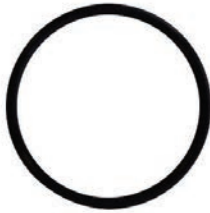
14" 6KW SINGLE PHASE INCOLOY
IMMERSION HEATER (1 3/4" THREAD)



HRP0296

14" 6KW SINGLE PHASE TITANIUM
IMMERSION HEATER (1 3/4" THREAD)

IMMERSION HEATERS FOR UNVENTED CYLINDERS



HRP0333

IMMERSION HEATER O-RING 1 3/4"



HRP0384

OSO SINGLE PHASE 3KW IMMERSION HEATER 8015192



HRP0453

OSO SINGLE PHASE 4.5KW IMMERSION HEATER 71269 (71270)



HRP0307

OSO IMMERSION SPANNER



HRP0536

RANGE TRIBUNE XE IMMERSION



65101884

ARISTON 3KW IMMERSION HEATER & ANODE (NO GASKET)



60002827

ARISTON 3KW IMMERSION HEATER & ANODE (NO GASKET)



924087

ARISTON IMMERSION HEATER GASKET

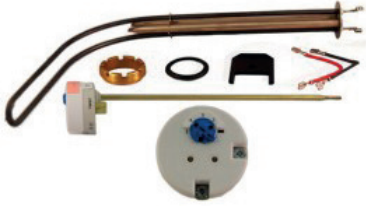


95606920

HEATRAE 11" IMMERSION HEATER MK1 (1 3/4" THREAD)

UNVENTED CYLINDER SPARES
IMMERSION HEATERS

IMMERSION HEATERS FOR UNVENTED CYLINDERS



95606961

HEATRAE SADIA LOWER IMMERSION
KIT MK2



95606962

HEATRAE SADIA UPPER IMMERSION
KIT MK2



95606963

HEATRAE SADIA LOWER IMMERSION
KIT MK2



95606964

HEATRAE SADIA UPPER IMMERSION
KIT MK2



95606984

HEATRAE SADIA LOWER IMMERSION
INDIRECT MODELS MK3



95606986

HEATRAE SADIA UPPER IMMERSION
INDIRECT MODELS MK3



95606988

HEATRAE SADIA LOWER
IMMERSION DIRECT MODELS
MK3



95606989

HEATRAE SADIA UPPER
IMMERSION DIRECT MODELS
MK3



95607861

HEATRAE SADIA
IMMERSION KEY



7702935

HEATRAE SADIA
IMMERSION GASKET

THERMOSTATS



HRP0198
TSR THERMOSTAT



HRP0197
TSE THERMOSTAT



HRP0473
UNIVERSAL THERMOSTAT



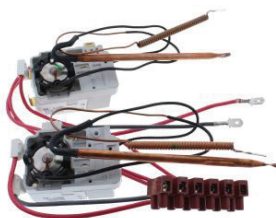
691216
TBS THERMOSTAT



65101396
TBS THERMOSTAT 450MM



95612720
HEATRAE COMBINED THERMOSTAT &
THERMAL CUT-OUT (DIRECT)



95612719
HEATRAE COMBINED THERMOSTAT &
THERMAL CUT-OUT (INDIRECT)



95980025
HEATRAE TSD 11" ROD THERMOSTAT



95980009
HEATRAE VKL 11" ROD THERMOSTAT

UNVENTED CYLINDER SPARES
THERMOSTATS

THERMOSTATS



HRP0362
OSO 80030 THERMOSTAT



HRP0181
DUAL THERMOSTAT



HRP0188
HIGH LIMIT THERMOSTAT



HRP0289
SINGLE THERMOSTAT



95612697
HEATRAE INDIRECT THERMOSTAT



95612698
HEATRAE INDIRECT THERMAL CUT-OUT

UNVENTED CYLINDER SPARES
THERMOSTATS



HRP0200
INDIRECT THERMOSTAT
GTLH3161



HRP0201
INDIRECT THERMAL
CUT-OUT GTLHR070



HRP0173
STAINLESS STEEL
THERMOSTAT POCKET



HRP0172
COPPER THERMOSTAT
POCKET



THERMOSTATIC BLENDING VALVES & AUTO BYPASS VALVES



HRP0523
OVENTROP BRAWA THERMOSTATIC BLENDING VALVE



15TMV
ALTECNIC 15MM THERMOSTATIC MIXING VALVE



22TMV
ALTECNIC 22MM THERMOSTATIC MIXING VALVE



28TMV
28MM MIXCAL III THERMOSTATIC BLENDING VALVE



HRP0475
RWC 15MM HEATGUARD DUAL TMV2/3



HRP0486
RWC 15MM HEATGUARD DUAL TMV2/3 TWO IN ONE



HRP0528
RWC ANTI TAMPER 22MM HEATGUARD TEMPERING VALVE



HRP0479
THERMOSTATIC BLENDING VALVE REPLACES EP100071



22ABP
22MM ANGLED AUTO BYPASS VALVE



22ABPSTR
22MM STRAIGHT AUTO BYPASS VALVE



28ABP
28MM ANGLED AUTO BYPASS VALVE



28ABPSTR
28MM STRAIGHT AUTO BYPASS VALVE

UNVENTED CYLINDER SPARES
TBVS & AUTO BYPASS VALVES

AUTOMATIC AIR VENTS



15AAV
15MM AUTO AIR VENT



502030
MINICAL AUTOMATIC AIR VENT 3/8\"M



502430
ROBOCAL AUTOMATIC AIR VENT 3/8\"M



502530
ROBOCAL AUTOMATIC AIR VENT 3/8\"M
WITH CHECK VALVE



502640
ROBOCAL AUTOMATIC AIR VENT 1/2\"M



502649
ROBOCAL 15MM AUTO AIR VENT



502040
MINICAL AUTOMATIC AIR VENT 1/2\"M



502730
ROBOCAL AUTOMATIC AIR VENT WITH
CHECK VALVE 3/8\"M



502130
MINICAL AUTOMATIC AIR VENT WITH
CHECK VALVE 3/8\"M

UNVENTED CYLINDER SPARES
AUTOMATIC AIR VENTS

NOZZLES

How do I identify the correct nozzle?



All the information needed to identify an oil nozzle will be on the nozzle itself and usually displayed on the appliance data plate

As an example our code **HRP80ES065** is comprised of the HRP prefix, the spray angle, spray pattern and the gallons per hour rate as shown below

Spray angle: 80 degrees
Spray pattern: ES
GPH rate: 0.65 Gallons per hour. 1.10 GPH would be shown as 110 and so on

SEARCH CODE	DESCRIPTION	SEARCH CODE	DESCRIPTION
HRP30S150	DANFOSS 1.50 X 30 S NOZZLE	HRP60W065	DELAVAN 0.65 X 60 W NOZZLE
HRP45S110	DANFOSS 1.10 X 45 S NOZZLE	HRP60W075	DELAVAN 0.75 X 60 W NOZZLE
HRP45S125	DANFOSS 1.25 X 45 S NOZZLE	HRP60W085	DELAVAN 0.85 X 60 W NOZZLE
HRP45S150	DANFOSS 1.50 X 45 S NOZZLE	HRP60W100	DELAVAN 1.00 X 60 W NOZZLE
HRP45S175	DANFOSS 1.75 X 45 S NOZZLE	HRP60W110	DELAVAN 1.10 X 60 W NOZZLE
HRP45S350	DANFOSS 3.50 X 45 S NOZZLE	HRP60W125	DELAVAN 1.25 X 60 W NOZZLE
HRP60EH045	DANFOSS 0.45 X 60 EH NOZZLE	HRP60W135	DELAVAN 1.35 X 60 W NOZZLE
HRP60EH050	DANFOSS 0.50 X 60 EH NOZZLE	HRP60W150	DELAVAN 1.50 X 60 W NOZZLE
HRP60EH055	DANFOSS 0.55 X 60 EH NOZZLE	HRP80EH040	DANFOSS 0.40 X 80 EH NOZZLE
HRP60EH060	DANFOSS 0.60 X 60 EH NOZZLE	HRP80EH045	DANFOSS 0.45 X 80 EH NOZZLE
HRP60EH065	DANFOSS 0.65 X 60 EH NOZZLE	HRP80EH050	DANFOSS 0.50 X 80 EH NOZZLE
HRP60EH075	DANFOSS 0.75 X 60 EH NOZZLE	HRP80EH055	DANFOSS 0.55 X 80 EH NOZZLE
HRP60EH085	DANFOSS 0.85 X 60 EH NOZZLE	HRP80EH060	DANFOSS 0.60 X 80 EH NOZZLE
HRP60EH100	DANFOSS 1.00 X 60 EH NOZZLE	HRP80EH065	DANFOSS 0.65 X 80 EH NOZZLE
HRP60EH110	DANFOSS 1.10 X 60 EH NOZZLE	HRP80EH075	DANFOSS 0.75 X 80 EH NOZZLE
HRP60ES040	DANFOSS 0.40 X 60 ES NOZZLE	HRP80EH085	DANFOSS 0.85 X 80 EH NOZZLE
HRP60ES045	DANFOSS 0.45 X 60 ES NOZZLE	HRP80EH100	DANFOSS 1.00 X 80 EH NOZZLE
HRP60ES050	DANFOSS 0.50 X 60 ES NOZZLE	HRP80EH110	DANFOSS 1.10 X 80 EH NOZZLE
HRP60ES055	DANFOSS 0.55 X 60 ES NOZZLE	HRP80ES040	DANFOSS 0.40 X 80 ES NOZZLE
HRP60ES060	DANFOSS 0.60 X 60 ES NOZZLE	HRP80ES045	DANFOSS 0.45 X 80 ES NOZZLE
HRP60ES065	DANFOSS 0.65 X 60 ES NOZZLE	HRP80ES050	DANFOSS 0.50 X 80 ES NOZZLE
HRP60ES075	DANFOSS 0.75 X 60 ES NOZZLE	HRP80ES055	DANFOSS 0.55 X 80 ES NOZZLE
HRP60ES085	DANFOSS 0.85 X 60 ES NOZZLE	HRP80ES060	DANFOSS 0.60 X 80 ES NOZZLE
HRP60ES100	DANFOSS 1.00 X 60 ES NOZZLE	HRP80ES065	DANFOSS 0.65 X 80 ES NOZZLE
HRP60ES110	DANFOSS 1.10 X 60 ES NOZZLE	HRP80ES075	DANFOSS 0.75 X 80 ES NOZZLE
HRP60H065	DANFOSS 0.65 X 60 H NOZZLE	HRP80ES085	DANFOSS 0.85 X 80 ES NOZZLE
HRP60H085	DANFOSS 0.85 X 60 H NOZZLE	HRP80ES100	DANFOSS 1.00 X 80 ES NOZZLE

NOZZLES



SEARCH CODE	DESCRIPTION
HRP60H125	DANFOSS 1.25 X 60 H NOZZLE
HRP60H150	DANFOSS 1.50 X 60 H NOZZLE
HRP60H175	DANFOSS 1.75 X 60 H NOZZLE
HRP60H200	DANFOSS 2.00 X 60 H NOZZLE
HRP60S030	DANFOSS 0.30 X 60 S NOZZLE
HRP60S050	DANFOSS 0.50 X 60 S NOZZLE
HRP60S060	DANFOSS 0.60 X 60 S NOZZLE
HRP60S065	DANFOSS 0.65 X 60 S NOZZLE
HRP60S075	DANFOSS 0.75 X 60 S NOZZLE
HRP60S085	DANFOSS 0.85 X 60 S NOZZLE
HRP60S100	DANFOSS 1.00 X 60 S NOZZLE
HRP60S110	DANFOSS 1.10 X 60 S NOZZLE
HRP60S120	DANFOSS 1.20 X 60 S NOZZLE
HRP60S125	DANFOSS 1.25 X 60 S NOZZLE
HRP60S135	DANFOSS 1.35 X 60 S NOZZLE
HRP60S150	DANFOSS 1.50 X 60 S NOZZLE
HRP60S165	DANFOSS 1.65 X 60 S NOZZLE
HRP60S175	DANFOSS 1.75 X 60 S NOZZLE
HRP60S200	DANFOSS 2.00 X 60 S NOZZLE
HRP60S225	DANFOSS 2.25 X 60 S NOZZLE
HRP60S250	DANFOSS 2.50 X 60 S NOZZLE
HRP60S275	DANFOSS 2.75 X 60 S NOZZLE
HRP60S300	DANFOSS 3.00 X 60 S NOZZLE
HRP60S350	DANFOSS 3.50 X 60 S NOZZLE
HRP60S400	DANFOSS 4.00 X 60 S NOZZLE
HRP60W050	DELAVAN 0.50 X 60 W NOZZLE
HRP60W055	DELAVAN 0.55 X 60 W NOZZLE
HRP60W060	DELAVAN 0.60 X 60 W NOZZLE

SEARCH CODE	DESCRIPTION
HRP80ES110	DANFOSS 1.10 X 80 ES NOZZLE
HRP80H045	DANFOSS 0.45 X 80 H NOZZLE
HRP80H055	DANFOSS 0.55 X 80 H NOZZLE
HRP80H065	DANFOSS 0.65 X 80 H NOZZLE
HRP80H075	DANFOSS 0.75 X 80 H NOZZLE
HRP80H085	DANFOSS 0.85 X 80 H NOZZLE
HRP80H100	DANFOSS 1.00 X 80 H NOZZLE
HRP80H135	DANFOSS 1.35 X 80 H NOZZLE
HRP80H300	DANFOSS 3.00 X 80 H NOZZLE
HRP80S045	DANFOSS 0.45 X 80 S NOZZLE
HRP80S055	DANFOSS 0.55 X 80 S NOZZLE
HRP80S060	DANFOSS 0.60 X 80 S NOZZLE
HRP80S065	DANFOSS 0.65 X 80 S NOZZLE
HRP80S075	DANFOSS 0.75 X 80 S NOZZLE
HRP80S085	DANFOSS 0.85 X 80 S NOZZLE
HRP80S100	DANFOSS 1.00 X 80 S NOZZLE
HRP80S120	DANFOSS 1.20 X 80 S NOZZLE
HRP80S125	DANFOSS 1.25 X 80 S NOZZLE
HRP80S135	DANFOSS 1.35 X 80 S NOZZLE
HRP80S165	DANFOSS 1.65 X 80 S NOZZLE
HRP80S175	DANFOSS 1.75 X 80 S NOZZLE
HRP80S200	DANFOSS 2.00 X 80 S NOZZLE
HRP80S225	DANFOSS 2.25 X 80 S NOZZLE
HRP80W060	DELAVAN 0.60 X 80 W NOZZLE
HRP80W075	DELAVAN 0.75 X 80 W NOZZLE
HRP80W125	DELAVAN 1.25 X 80 W NOZZLE
HRP80W135	DELAVAN 1.35 X 80 W NOZZLE

For our full range of oil nozzles please visit our website www.hrptrade.co.uk

Available Now

RIELLO RDB NEUTRAL BURNERS

The discounted boiler burner solutions.



Compatible with most oil boilers

4 sizes for outputs ranging from 16.5 to 120kW

Compact size

Boiler flanges included

CF grill fitted and BF air intake supplied separately within box

All models use same the components as the RDB series

SEARCH CODE	PRODUCT TYPE	MANUFACTURER	MANUFACTURER CODE	DESCRIPTION
RDB1NEUTRALBURNER	BURNERS	RIELLO	3513008	RDB1 NEUTRAL BURNER
RDB2NEUTRALBURNER	BURNERS	RIELLO	3513603	RDB2 NEUTRAL BURNER
RDB3NEUTRALBURNER	BURNERS	RIELLO	3748950	RDB3 NEUTRAL BURNER
RDB4NEUTRALBURNER	BURNERS	RIELLO	3748850	RDB4 NEUTRAL BURNER

Visit www.rielloburners.co.uk/selector
to correct identify your replacement burner

BURNERS

How do I identify the correct burner?

The two main ways to identify the correct burner for your appliance are:

1. Where the burner is discontinued use the simple three step burner selector tool at www.rielloburners.co.uk/selector to find a suitable replacement.
2. Where the burner is current email a photo of the burner data plate including TYPE and COD number as well as the boiler date plate to enquiries@hrptrade.co.uk where a member of the team will be happy to assist.

SEARCH CODE	PRODUCT TYPE	MANUFACTURER	MANUFACTURER CODE	DESCRIPTION
RDB1NEUTRALBURNER	BURNERS	RIELLO	3513008	RDB1 NEUTRAL BURNER
RDB2NEUTRALBURNER	BURNERS	RIELLO	3513603	RDB2 NEUTRAL BURNER
RDB3NEUTRALBURNER	BURNERS	RIELLO	3748950	RDB3 NEUTRAL BURNER
RDB4NEUTRALBURNER	BURNERS	RIELLO	3748850	RDB4 NEUTRAL BURNER
HRP9500	BURNERS	RIELLO	3748557-485T50	50/70 RDB1 BURNER & NOZZLE
HRP9501	BURNERS	RIELLO	3748357-483T50	70/90 RDB1 BURNER & NOZZLE
HRP9508	BURNERS	RIELLO	3747469	R40 G20 BURNER
HRP9510	BURNERS	RIELLO	3748251	R40 G20S BURNER
HRP9511	BURNERS	RIELLO	3749251	R40 G5 BF BURNER
HRP9507	BURNERS	RIELLO	3744451	R40 G5 BURNER
HRP9502	BURNERS	RIELLO	351415	RDB 2.2 - 15-21 KW
HRP9503	BURNERS	RIELLO	3514257	RDB 2.2 - 21-26 KW
HRP9509	BURNERS	RIELLO	3746457	RIELLO R40 G10 BURNER
HRP9506	BURNERS	RIELLO	3743751	RIELLO R40 G3B OIL BURNER
HRP9505	BURNERS	RIELLO	3748941	RIELLO RDB 3.2 BURNER
HRP9504	BURNERS	RIELLO	3514557	RIELLO RDB2.2 OIL BURNER 26-33KW
HRP9101	BURNERS	NUWAY	B01-S40-0-001	ST40 S1S 63 (STIRLING BURNER)
HRP9103	BURNERS	NUWAY	B01-S90-0-001	ST90 S1S 80 (STIRLING BURNER)





Reliable energy. Flexible approach.

XSERIES BURNERS

RELIABLE ENERGY FROM EOGB

XSERIES BURNERS FOR DOMESTIC AND LIGHT COMMERCIAL HEATING
X400, X500, X600 - 14KW TO 80KW BURNERS

EOGB's XSeries range of oil burners delivers excellence in performance and reliability, backed by first-class technical expertise and a personable, responsive service.

DESIGNED FOR THE UK

The XSeries is built for the UK where there are significant differences in the oil fired burner market from other countries and the predominant use of kerosene, coupled with modern boiler designs, places extra demands on the burner.

The Xseries range features:

- SUPERIOR PERFORMANCE
- SOPHISTICATED CONSTRUCTION
- ADVANCED DESIGN
- EASY MAINTENANCE

BUILT FOR TODAY'S MARKETS

From concept to production, every aspect of the XSeries has been rigorously tested.

Attention to detail ensures reliable, continuous operation and compatibility with high resistance oil-fired boilers. Powerful motors with high temperature bearings are standard to give extra life and reliability and internationally recognised quality procedures are followed to monitor the highest standards of manufacture and performance.



SEARCH CODE	MANUFACTURER CODE	DESCRIPTION
HRPX400	E32-100-101-360-01	X400 14-36KW (LMO)
HRPX500	E32-200-102-300-00	X500 34-62KW 230/240V
HRPX600	E32-300-114-300-00	X600-1 140MM 50-80KW

OIL PUMPS & CAPACITORS



SEARCH CODE	PRODUCT TYPE	MANUFACTURER	MANUFACTURER CODE	DESCRIPTION
HRP9082	OIL PUMPS	RIELLO	20030953	RIELLO RDB BIO FUEL PUMP REPLACES 3020475
HRP9083	OIL PUMPS	RIELLO	20031996	RIELLO R40 BIO FUEL PUMP MECTRON R40
HRP9003	OIL PUMPS	DANFOSS	D01-071N7141	DANFOSS BFP11L3 OIL PUMP DIAMOND RANGE
HRP9011	OIL PUMPS	DANFOSS	D01-071N7155	DANFOSS BFP11R3 OIL PUMP DIAMOND RANGE
HRP9004	OIL PUMPS	DANFOSS	D01-071N7156	DANFOSS BFP21L3 OIL PUMP DIAMOND RANGE
HRP9012	OIL PUMPS	DANFOSS	D01-071N7157	DANFOSS BFP21R3 OIL PUMP DIAMOND RANGE
HRP9005	OIL PUMPS	DANFOSS	D01-071N8213	DANFOSS BFP41L3 OIL PUMP DIAMOND RANGE
HRP9006	OIL PUMPS	DANFOSS	D01-071N7168	DANFOSS BFP20L3 OIL PUMP DIAMOND RANGE
HRP9007	OIL PUMPS	DANFOSS	D01-071N3201	DANFOSS BFP52EL3 OIL PUMP DIAMOND RANGE
HRP9122	OIL PUMPS	RIELLO	20032002	RIELLO PUMP REPLACES 3007343
HRP9546	OIL PUMPS	RIELLO	20033550	RIELLO PUMP REPLACES 3003998
HRP9564	OIL PUMPS	RIELLO	20033547	RIELLO PUMP (RL50) REPLACES 3003835
HRP9616	OIL PUMPS	RIELLO	3013992	RIELLO PUMP RL34MZ REPLACES 3003833
HRP9010	OIL PUMPS	DANFOSS	D01-071N7253	DANFOSS BFP10R3 OIL PUMP DIAMOND 2.0 SERIES RIGHT HAND ROTATION; SIDE PRESS/ADJ
HRP9080	OIL PUMPS	RIELLO	D01-071G0205	BFP PUMP LEAD
HRP9121	OIL PUMPS	RIELLO	20031999	RIELLO PUMP G20 REPLACES 3007803

OIL SPARES
OIL PUMPS & CAPACITORS



SEARCH CODE	PRODUCT TYPE	MFR	MANUFACTURER CODE	DESCRIPTION
HRP9077	CAPACITORS	RIELLO	20071576	RIELLO CAPACITOR P2 4.5UF
HRP9527	CAPACITORS	RIELLO	20087035	RIELLO RDB CAPACITOR P2 4UF
HRP9096	CAPACITORS	RIELLO	20087025	RIELLO CAPACITOR P2 4UF MECTRON R40 MOULDED LEADS
HRP9097	CAPACITORS	RIELLO	M02-0004	CAPACITOR 4MF 400V PLAIN WITH CAP (X SERIES)
HRP9127	CAPACITORS	RIELLO	20081251	RIELLO CAPACITOR P2 5UF
HRP9068	CAPACITORS	RIELLO	20087027	RIELLO CAPACITOR P2 5UF
HRP9565	CAPACITORS	RIELLO	20087028	RIELLO CAPACITOR P2 6.3UF
HRP9566	CAPACITORS	RIELLO	20087030	RIELLO CAPACITOR P2 12.5UF
HRP9134	CAPACITORS	RIELLO	3003767	RIELLO CAPACITOR (RL/RS 38) 12.5UF

BURNER MOTORS

SEARCH CODE	PRODUCT TYPE	MFR	MANUFACTURER CODE	DESCRIPTION
HRP9086	BURNER MOTORS	RIELLO	20071577	RIELLO RDB MOTOR CW CAPACITOR P2 4.5UF
HRP9084	BURNER MOTORS	RIELLO	3007971	RIELLO MOTOR MECTRON R40
HRP9110	BURNER MOTORS	RIELLO	3005820	RIELLO MOTOR
HRP9542	BURNER MOTORS	RIELLO	3008964	RIELLO MOTOR
HRP9543	BURNER MOTORS	RIELLO	3008972	RIELLO MOTOR FOR GS20/M
HRP9131	BURNER MOTORS	RIELLO	3002332	RIELLO SERVOMOTOR
HRP9548	BURNER MOTORS	RIELLO	3002576	RIELLO AIR SHUTTER MOTOR
HRP9111	BURNER MOTORS	RIELLO	3006898	RIELLO AIR SHUTTER MOTOR
HRP9117	BURNER MOTORS	RIELLO	3005286	RIELLO MOTOR
HRP9574	BURNER MOTORS	RIELLO	3002488	RIELLO SERVOMOTOR FOR GS10M/GS20/M
HRP9579	BURNER MOTORS	RIELLO	3003768	RIELLO MOTOR (RS28/RL28)
HRP9601	BURNER MOTORS	RIELLO	3008408	RIELLO MOTOR
HRP9612	BURNER MOTORS	RIELLO	3012318	RIELLO SERVOMOTOR
HRP9160	BURNER MOTORS	RIELLO	3006612	RIELLO MOTOR GAS4 OR 4/2 220V PH
HRP9092	BURNER MOTORS	EOGB	M02-1-70-03	STERLING AACO MOTOR B9 70W 1PH
HRP9094	BURNER MOTORS	EOGB	M02-1-90-12	MOTOR 10/11/12/99/109 AACO 90W 1PH (ORANGE/BLACK)
HRP9093	BURNER MOTORS	EOGB	M02-1-90-13	STERLING AACO B10/11/20 & 2020 90W 1PH
HRP9091	BURNER MOTORS	EOGB	M02-1-90-16	STERLING AACO MOTOR 90W 1PH
HRP9090	BURNER MOTORS	EOGB	M02-1-90-18	X400 MOTOR 90W
HRP9095	BURNER MOTORS	EOGB	M02-1-125-04	MOTOR STERLING 90 /130/STG146
HRP9514	BURNER MOTORS	ECOFLAM	65322784	ECOFLAM MOTOR 75WATT DOUBLE END SIMEL
HRP9516	BURNER MOTORS	ECOFLAM	65074326	ECOFLAM HEB90-12 MINOR 4 MOTOR

OIL LINES

SEARCH CODE	PRODUCT TYPE	DESCRIPTION
HRP9002	OIL LINES	1/4IN FEMALE BENT X 1/4IN FEMALE STRAIGHT X 0890MM LONGLIFE GREEN
HRP9049	OIL LINES	1/4IN FEMALE BENT X 1/4IN FEMALE STRAIGHT X 600MM LONGLIFE GREEN
HRP9050	OIL LINES	1/4IN FEMALE STRAIGHT X 1/4IN FEMALE STRAIGHT X 1000MM LONGL
HRP9053	OIL LINES	1/4IN FEMALE STRAIGHT X 1/4IN FEMALE STRAIGHT X 600MM LONGLI
HRP9051	OIL LINES	1/4IN MALE BENT X 1/4IN FEMALE STRAIGHT X 440MM LONGLIFE GREEN
HRP9000	OIL LINES	1/4IN MALE BENT X 1/4IN FEMALE STRAIGHT X 890MM LONGLIFE GREEN
HRP9052	OIL LINES	1/4IN MALE BENT X 3/8IN FEMALE STRAIGHT X 440MM LONGLIFE GREEN
HRP9048	OIL LINES	1/4IN MALE BENT X 3/8IN FEMALE STRAIGHT X 600MM LONGLIFE GREEN
HRP9001	OIL LINES	1/4IN MALE BENT X 3/8IN FEMALE STRAIGHT X 890MM LONGLIFE GREEN
HRP9120	OIL LINES	RIELLO FLEXIBLE HOSE 20022604
HRP9119	OIL LINES	RIELLO FLEXIBLE PIPE 3075012
HRP9123	OIL LINES	RIELLO FLEXIBLE TUBE (RL28) 20033646
HRP9124	OIL LINES	RIELLO FLEXIBLE TUBE 20033716
HRP9033	TIGER LOOPS	EXTERNAL TIGER LOOP 1/4IN CONNECTIONS



Reliable energy. Flexible approach.

THE RUBY-RED FLEXI FROM EOGB

WHY RISK AN OIL LEAK FROM YOUR FLEXIBLE OIL LINE?

THE RUBY-RED FLEXI IS YOUR PEACE-OF-MIND SOLUTION.

- A FLEXIBLE OIL LINE WITH A UNIQUE “DUAL CONTAINMENT”, LEAK-FREE FEATURE.
- 5-YEAR WARRANTY.
- A FLEXIBLE, PTFE TUBE, STAINLESS STEEL OVER-BRAID, AND TRANSLUCENT-RED PU COVER, RUBY-RED FLEXI OFFERS THE VERY BEST SOLUTION FOR YOUR OIL-FIRED BOILER HOSE.
- PTFE IS RECOGNISED AS THE GO-TO MATERIAL FOR CHEMICAL RESISTANCE, HENCE IT'S SUPERIOR RESISTANCE TO ALL HEATING OILS (INCLUDING BIOFUELS, TALLOW & HVO, IN ANY LEVEL OF CONCENTRATION!) - REFLECTED IN THE WARRANTY PERIOD.



OIL SPARES
RUBY RED OIL LINES

CODE	DESCRIPTION
HRP9210	RUBY RED OIL LINE 1/4" 90 DEG MALE X 1/4" STRAIGHT FEMALE 440MM
HRP9211	RUBY RED OIL LINE 1/4" 90 DEG MALE X 3/8" STRAIGHT FEMALE 440MM
HRP9212	RUBY RED OIL LINE 1/4" 90 DEG MALE X 3/8" STRAIGHT FEMALE 600MM
HRP9213	RUBY RED OIL LINE 1/4" STRAIGHT FEMALE X 1/4" STRAIGHT FEMALE 600MM
HRP9214	RUBY RED OIL LINE 1/4" 90 DEG MALE X 1/4" 90 DEG FEMALE 890MM
HRP9215	RUBY RED OIL LINE 1/4" 90 DEG MALE X 1/4" STRAIGHT FEMALE 890MM
HRP9216	RUBY RED OIL LINE 1/4" 90 DEG MALE X 3/8" STRAIGHT FEMALE 890MM
HRP9217	RUBY RED OIL LINE 1/4" 90 DEG FEMALE X 1/4" STRAIGHT FEMALE 890MM
HRP9218	RUBY RED OIL LINE 1/4" STRAIGHT MALE X 1/4" STRAIGHT FEMALE 1000MM
HRP9219	RUBY RED OIL LINE 1/4" STRAIGHT FEMALE X 1/4" STRAIGHT FEMALE 1000MM



SOLENOID COILS & TRANSFORMERS



SEARCH CODE	PRODUCT TYPE	MANUFACTURER	MANUFACTURER CODE	DESCRIPTION
HRP9054	SOLENOID COILS	DANFOSS	B16189F	BFP PUMP / SOLENIOD COIL 240V
HRP9061	SOLENOID COILS	RIELLO	3008648	RIELLO COIL RDB
HRP9062	SOLENOID COILS	RIELLO	3002279	RIELLO COIL MECTRON R40
HRP9135	SOLENOID COILS	RIELLO	3003828	RIELLO COIL
HRP9538	SOLENOID COILS	RIELLO	3003594	RIELLO COIL
HRP9130	SOLENOID COILS	RIELLO	3002300	RIELLO COIL G20D
HRP9073	SOLENOID COILS	RIELLO	3003001	RIELLO COIL



SEARCH CODE	PRODUCT TYPE	MANUFACTURER	MANUFACTURER CODE	DESCRIPTION
HRP9026	TRANSFORMERS	DANFOSS	052F4064	DANFOSS EBI TRANSFORMER
HRP9515	TRANSFORMERS	ECOFLAM	65323243	ECOFLAM TRANSFORMER E820 MINOR MINOR 1 HW
HRP9518	TRANSFORMERS	NUWAY	C02032U	NUWAY NOL25 TRANSFORMER
HRP9539	TRANSFORMERS	RIELLO	3003785	RIELLO TRANSFORMER
HRP9540	TRANSFORMERS	RIELLO	3003847	RIELLO TRANSFORMER (RS RANGE)
HRP9587	TRANSFORMERS	RIELLO	3006592	RIELLO TRANSFORMER
HRP9610	TRANSFORMERS	RIELLO	3012159	RIELLO TRANSFORMER
HRP9056	TRANSFORMERS	DANFOSS	D01-052F5204	EBI TRANSFORMER MAINS CABLE 500MM

OIL SPARES
SOLENOID COILS & TRANSFORMERS

PHOTOCELLS, OIL BOWLS & FILTERS



SEARCH CODE	PRODUCT TYPE	MANUFACTURER	MANUFACTURER CODE	DESCRIPTION
HRP9009	PHOTOCELLS	HONEYWELL	S01-MZ770S-2	MZ770S PHOTOCELL 40MM KIT
HRP9162	PHOTOCELLS	RIELLO	20132526	RIELLO RDB ANALOGUE PHOTOCELL LONG
HRP9020	PHOTOCELLS	HONEYWELL	S01-MZ770S-80	SATRONIC MZ770S PHOTOCELL 80MM
HRP9163	PHOTOCELLS	RIELLO	20132550	RIELLO RDB DIGITAL PHOTOCELL LONG
HRP9531	PHOTOCELLS	RIELLO	3012091	RIELLO PHOTO CELL RL100/M
HRP9021	PHOTOCELLS	HONEYWELL		SATRONIC MZ770S PHOTOCELL LEAD 0.5METRE
HRP9022	PHOTOCELLS	SIEMANS	L01-QRB-L.M	SIEMENS QRB1A PHOTOCELL 50MM
HRP9025	PHOTOCELLS	RIELLO	20132573	RIELLO PHOTOCELL MECTRON R40
HRP9023	PHOTOCELLS	SIEMANS	65320082	LANDIS QRB1B A050B70A PHOTOCELL 500MM HIGH SENSITIVITY
HRP9513	PHOTOCELLS	RIELLO	20132553	RIELLO RDB PHOTOCELL SHORT
HRP9063	PHOTOCELLS	RIELLO	3013708	RIELLO BRAHMA PHOTOCELL (P.E. CELL) (3013708)



SEARCH CODE	PRODUCT TYPE	DESCRIPTION
HRP9029	OIL FILTERS & BOWLS	SHORT PAPER ELEMENTS FOR CROSSLAND STYLE BOWLS
HRP9027	OIL FILTERS & BOWLS	1/4IN FILTER BOWL WITH PAPER FILTER (SHORT CROSSLAND STYLE)
HRP9030	OIL FILTERS & BOWLS	LONG PAPER ELEMENTS FOR CROSSLAND STYLE BOWLS
HRP9028	OIL FILTERS & BOWLS	3/8IN FILTER BOWL WITH PAPER FILTER (SHORT CROSSLAND STYLE)
HRP9076	OIL FILTERS & BOWLS	SHORT FILTER OIL 3/8IN ALUMINIUM BOWL
HRP9057	OIL FILTERS & BOWLS	SHORT FILTER OIL 1/4IN ALUMINIUM BOWL
HRP9031	OIL FILTERS & BOWLS	1/4IN FILTER BOWL WITH PAPER FILTER (LONG CROSSLAND STYLE)
HRP9032	OIL FILTERS & BOWLS	3/8IN FILTER BOWL WITH PAPER FILTER (LONG CROSSLAND STYLE)
HRP9058	OIL FILTERS & BOWLS	SHORT BIOFUEL FILTER ELEMENT & SEAL (493)
HRP9560	OIL FILTERS & BOWLS	RIELLO ELECTRICAL FILTER (RL28) 3012160
HRP9575	OIL FILTERS & BOWLS	RIELLO ELECTRICAL FILTER 3002574

CONTROL BOXES



SEARCH CODE	PRODUCT TYPE	MANUFACTURER	MANUFACTURER CODE	DESCRIPTION
HRP9013	CONTROL BOXES	HONEYWELL	02431U	SATRONIC CONTROL BOX TF832.3
HRP9008	CONTROL BOXES	HONEYWELL	02231U	SATRONIC CONTROL BOX TF830.3
HRP9017	CONTROL BOXES	RIELLO	3008652	RIELLO CONTROL BOX 535 SE/LD RDB
HRP9528	CONTROL BOXES	RIELLO	20035388	RIELLO DIGITAL CONTROL BOX MO535-MPF
HRP9125	CONTROL BOXES	RIELLO	20037830	RIELLO DIGITAL CONTROL BOX MO535-MR1SF WAS 3020265
HRP9019	CONTROL BOXES	RIELLO	3001156	RIELLO CONTROL BOX 530 SE MECTRON R40
HRP9016	CONTROL BOXES	SIEMANS	LOA24171B27	LOA24.171B27 CONTROL BOX
HRP9014	CONTROL BOXES	HONEYWELL	0410005U	DK0970 MOD 5 CONTROL BOX
HRP9018	CONTROL BOXES	SIEMANS	LM014.111C2U	LM014 SIEMENS CONTROL BOX
HRP9129	CONTROL BOXES	RIELLO	3001174	RIELLO CONTROL BOX 552SE ITALIAN RG2D
HRP9139	CONTROL BOXES	RIELLO	3013073	RIELLO CONTROL BOX RMG 88 62 A2
HRP9015	CONTROL BOXES	SIEMANS	S01-DK0972-5	DK0972 MOD 5 CONTROL BOX
HRP9128	CONTROL BOXES	RIELLO	3001138	RIELLO CONTROL BOX RMG 508 SE
HRP9547	CONTROL BOXES	3833	20143555	CONTROL BOX MG 557-3 REPLACES 3020230
HRP9109	CONTROL BOXES	RIELLO	20142325	RIELLO CONTROL BOX MG 557-5 (20142325)
HRP9114	CONTROL BOXES	DANFOSS	057H6102	DANFOSS CONTROL BOX (2 STAGE) BH072.10 (057H6102)
HRP9568	CONTROL BOXES	RIELLO	20117694	RIELLO RDB BLU CONTROL BOX
HRP9573	CONTROL BOXES	RIELLO	3001157	RIELLO CONTROL BOX 530SE 110VOL 60HZ
HRP9614	CONTROL BOXES	RIELLO	3013362	RIELLO CONTROL BOX RMG/M
HRP9132	CONTROL BOXES	RIELLO	20137658	REILLO MG659 CONTROL BOX (20137658)
HRP9151	CONTROL BOXES	RIELLO	3001149	RIELLO CONTROL BOX 525 SE/3
HRP9152	CONTROL BOXES	RIELLO	3013071	RIELLO RMO 88.53 CONTROL BOX
HRP9153	CONTROL BOXES	RIELLO	3002478	RIELLO CONTROL BOX LME22
HRP9154	CONTROL BOXES	RIELLO	3001153	RIELLO CONTROL BOX 525 SE/S
HRP9155	CONTROL BOXES	RIELLO	3001150	RIELLO CONTROL BOX (503 SE)
HRP9156	CONTROL BOXES	RIELLO	3001139	RIELLO CONTROL BOX 509 SE

FIRE VALVES



SEARCH CODE	PRODUCT TYPE	MFR	MANUFACTURER CODE	DESCRIPTION
HRP9034	FIRE VALVES	TEDDINGTON	KBB/C/65_1.5M	65C/1.5M CAPILLARY
HRP9035	FIRE VALVES	TEDDINGTON	KBB/C/65_3.0M	65C/3M CAPILLARY
HRP9036	FIRE VALVES	TEDDINGTON	KBB/C/65_6.0M	65C/6M CAPILLARY
HRP9037	FIRE VALVES	TEDDINGTON	KBB/C/65_9.0M	65C/9M CAPILLARY
HRP9038	FIRE VALVES	TEDDINGTON	KBB/C/65_12.0M	65C/12M CAPILLARY
HRP9039	FIRE VALVES	TEDDINGTON	KBB/C/65_16.0M	65C/16M CAPILLARY
HRP9040	FIRE VALVES	TEDDINGTON	KBB/C/65_20.0M	65C/20M CAPILLARY
HRP9041	FIRE VALVES	TEDDINGTON	KBB/C/90_2.0M	90C/2.0M CAPILLARY
HRP9042	FIRE VALVES	TEDDINGTON	KBB/C/90_3.0M	90C/3.0M CAPILLARY
HRP9043	FIRE VALVES	TEDDINGTON	KBB/C/90_6.0M	90C/6.0M CAPILLARY
HRP9044	FIRE VALVES	TEDDINGTON	KBB/C/90_9.0M	90C/9.0M CAPILLARY
HRP9045	FIRE VALVES	TEDDINGTON	KBB/C/90_12.0M	90C/12.0M CAPILLARY
HRP9046	FIRE VALVES	TEDDINGTON	KBB/C/90_16.0M	90C/16.0M CAPILLARY
HRP9047	FIRE VALVES	TEDDINGTON	KBB/C/90_20.0M	90C/20.0M CAPILLARY



SEARCH CODE	PRODUCT TYPE	MFR	MANUFACTURER CODE	DESCRIPTION
HRP9200	FIRE VALVES	TESLA SAFFIRE	KFV6515	65/C 1.5M CAPILLARY
HRP9201	FIRE VALVES	TESLA SAFFIRE	KFV6530	65/C 3.0M CAPILLARY
HRP9202	FIRE VALVES	TESLA SAFFIRE	KFV6560	65/C 6.0M CAPILLARY
HRP9203	FIRE VALVES	TESLA SAFFIRE	KFV6590	65/C 9.0M CAPILLARY
HRP9204	FIRE VALVES	TESLA SAFFIRE	KFV65120	65/C 12.0M CAPILLARY
HRP9205	FIRE VALVES	TESLA SAFFIRE	KFV9020	90/C 2.0M CAPILLARY
HRP9206	FIRE VALVES	TESLA SAFFIRE	KFV9030	90/C 3.0M CAPILLARY
HRP9207	FIRE VALVES	TESLA SAFFIRE	KFV9060	90/C 6.0M CAPILLARY
HRP9208	FIRE VALVES	TESLA SAFFIRE	KFV9090	90/C 9.0M CAPILLARY

FANS & GASKETS



SEARCH CODE	PRODUCT TYPE	MANUFACTURER	MANUFACTURER CODE	DESCRIPTION
HRP9087	FANS	RIELLO	3005708	RIELLO FAN
HRP9143	FANS	RIELLO	3005788	RIELLO FAN
HRP9549	FANS	RIELLO	3003760	RIELLO FAN (RS28 AND RL28)
HRP9149	FANS	RIELLO	3005671	RIELLO FAN
HRP9144	FANS	RIELLO	3008645	RIELLO FAN
HRP9157	FANS	RIELLO	3005443	RIELLO FAN IMPELLOR (3005443)
HRP9105	FANS	RIELLO	3005799	RIELLO FAN



SEARCH CODE	PRODUCT TYPE	MANUFACTURER	MANUFACTURER CODE	DESCRIPTION
HRP9148	GASKETS, SEALS & FLANGES	RIELLO	3007178	RIELLO MOUNTING FLANGE SEAL MECTRON R40 PK 10
HRP9070	GASKETS, SEALS & FLANGES	RIELLO	3007132	RIELLO RING PK 10
HRP9089	GASKETS, SEALS & FLANGES	RIELLO	3005787	RIELLO FLANGE GASKET
HRP9150	GASKETS, SEALS & FLANGES	RIELLO	3008878	RIELLO SEAL KIT
HRP9088	GASKETS, SEALS & FLANGES	RIELLO	3005795	RIELLO FLANGE GASKET
HRP9079	GASKETS, SEALS & FLANGES	RIELLO	3007175	RIELLO O-RING PK 10
HRP9099	GASKETS, SEALS & FLANGES	RIELLO	3020261	RIELLO GASKET BURNER
HRP9590	GASKETS, SEALS & FLANGES	RIELLO	3007077	RIELLO SEAL
HRP9591	GASKETS, SEALS & FLANGES	RIELLO	3007169	RIELLO O-RING
HRP9597	GASKETS, SEALS & FLANGES	RIELLO	3007627	RIELLO LOCK OUT RESET SEAL (G5BF)
HRP9598	GASKETS, SEALS & FLANGES	RIELLO	3007629	RIELLO COLLAR SEAL (G5BF)
HRP9603	GASKETS, SEALS & FLANGES	RIELLO	3008636	FLANGE
HRP9617	GASKETS, SEALS & FLANGES	RIELLO	3020436	RIELLO FILTER O-RING
HRP9569	GASKETS, SEALS & FLANGES	RIELLO	3000439	RIELLO PUMP SEAL KIT MECTRON R40
HRP9584	GASKETS, SEALS & FLANGES	RIELLO	3005813	RIELLO FLANGE GASKET
HRP9138	GASKETS, SEALS & FLANGES	RIELLO	3003817	RIELLO FLANGE GASKET (RS AND RL)

ELECTRODES & LEADS

SEARCH CODE	PRODUCT TYPE	MANUFACTURER	MANUFACTURER CODE	DESCRIPTION
HRP9071	ELECTRODES & LEADS	RIELLO	3007513	RIELLO ELECTRODE ASSEMBLY MECTRON RDB
HRP9108	ELECTRODES & LEADS	RIELLO	3006709	RIELLO PROBE
HRP9074	ELECTRODES & LEADS	RIELLO	3003796	RIELLO ELECTRODE (RL RANGE)
HRP9107	ELECTRODES & LEADS	RIELLO	3006706	RIELLO ELECTRODE
HRP9116	ELECTRODES & LEADS	RIELLO	3012177	RIELLO PROBE FOR RS 28
HRP9145	ELECTRODES & LEADS	RIELLO	3012174	RIELLO PROBE FOR RS RANGE
HRP9534	ELECTRODES & LEADS	RIELLO	3003848	RIELLO PROBE LEAD
HRP9536	ELECTRODES & LEADS	RIELLO	3006704	RIELLO ELECTRODES FOR GS5
HRP9537	ELECTRODES & LEADS	RIELLO	3006707	RIELLO PROBE FOR GS5
HRP9142	ELECTRODES & LEADS	RIELLO	3006943	RIELLO ELECTRODE
HRP9533	ELECTRODES & LEADS	RIELLO	3002918	RIELLO CERAMIC ELECTRODE
HRP9158	ELECTRODES & LEADS	RIELLO	3008794	RIELLO HIGH VOLTAGE LEAD RDB PK 6
HRP9069	ELECTRODES & LEADS	RIELLO	3003850	RIELLO ELECTRODE (RS28/38/50)
HRP9544	ELECTRODES & LEADS	RIELLO	3012130	RIELLO ELECTRODE FOR EXT HEAD
HRP9545	ELECTRODES & LEADS	RIELLO	3013725	RIELLO PROBE
HRP9147	ELECTRODES & LEADS	RIELLO	3006708	RIELLO PROBE
HRP9112	ELECTRODES & LEADS	RIELLO	3002919	RIELLO CERAMIC ELECTRODE
HRP9118	ELECTRODES & LEADS	RIELLO	3012393	RIELLO H.T. LEADS PK 10
HRP9551	ELECTRODES & LEADS	RIELLO	3003894	RIELLO ELECTRODE (RS 28.1/38.1)
HRP9554	ELECTRODES & LEADS	RIELLO	3005490	RIELLO EARTH ELECTRODE
HRP9559	ELECTRODES & LEADS	RIELLO	3012017	RIELLO ELECTRODE FOR RS 130
HRP9561	ELECTRODES & LEADS	RIELLO	3012176	RIELLO PROBE
HRP9562	ELECTRODES & LEADS	RIELLO	3014037	RIELLO ELECTRODE
HRP9066	ELECTRODES & LEADS	RIELLO	3007988	RIELLO PROBE FOR BS3D
HRP9067	ELECTRODES & LEADS	RIELLO	3008454	RIELLO H T LEAD PK 5
HRP9104	ELECTRODES & LEADS	RIELLO	3005826	RIELLO ELECTRODE
HRP9115	ELECTRODES & LEADS	RIELLO	3012129	RIELLO ELECTRODES RS50
HRP9161	ELECTRODES & LEADS	RIELLO	3008453	RIELLO H T LEAD CE GS10/20 PK 5
HRP9524	ELECTRODES & LEADS	RIELLO	20018545	GRANT RDB 2.2 BX ELECTRODES (15-26KW)
HRP9570	ELECTRODES & LEADS	RIELLO	3000624	RIELLO LONG ELECTRODE
HRP9571	ELECTRODES & LEADS	RIELLO	3000625	RIELLO PROBE
HRP9576	ELECTRODES & LEADS	RIELLO	3002575	RIELLO H T LEAD
HRP9577	ELECTRODES & LEADS	RIELLO	3002584	RIELLO ELECTRODE
HRP9582	ELECTRODES & LEADS	RIELLO	3003972	RIELLO H.T. LEAD
HRP9586	ELECTRODES & LEADS	RIELLO	3006581	RIELLO SHORT ELECTRODE
HRP9599	ELECTRODES & LEADS	RIELLO	3007713	RIELLO ELECTRODE ASSEMBLY
HRP9602	ELECTRODES & LEADS	RIELLO	3008490	RIELLO HT LEAD
HRP9606	ELECTRODES & LEADS	RIELLO	3008931	RIELLO ELECTRODE BS3D
HRP9526	ELECTRODES & LEADS	RIELLO	20117455	GRANT IGNITION ELECTRODES
HRP9059	ELECTRODES & LEADS	NUWAY	B03-00-118-86701	ELECTRODE BLOCK STERLING
HRP9113	ELECTRODES & LEADS	RIELLO	3012015	RIELLO ELECTRODE FOR (RS70/100)
HRP9137	ELECTRODES & LEADS	RIELLO	3003794	RIELLO HT LEAD PK 10 (RS/RL RANGE)
HRP9140	ELECTRODES & LEADS	RIELLO	3005721	RIELLO BLOCK ELECTRODE R40 MECTRON 2 3
HRP9141	ELECTRODES & LEADS	RIELLO	3008932	RIELLO IGNITION ELECTRODE BS4-4/D
HRP9146	ELECTRODES & LEADS	RIELLO	3012175	RIELLO PROBE
HRP9159	ELECTRODES & LEADS	RIELLO	3006122	RIELLO ELECTRODE LEAD (10 PACK)

MISCELLANEOUS OIL SPARES

SEARCH CODE	PRODUCT TYPE	MFR	MANUFACTURER CODE	DESCRIPTION
HRP9604	AIR DAMPERS	RIELLO	3008647	RIELLO AIR DAMPER ASSEMBLY
HRP9609	AIR DAMPERS	RIELLO	3012085	RIELLO AIR DAMPER ASSEMBLY
HRP9611	AIR DAMPERS	RIELLO	3012290	RIELLO DAMPER ASSEM GROUP (EACH)

SEARCH CODE	PRODUCT TYPE	MFR	MANUFACTURER CODE	DESCRIPTION
HRP9580	BEARINGS AND COLLARS	RIELLO	3003841	RIELLO BEARING
HRP9588	BEARINGS AND COLLARS	RIELLO	3006687	RIELLO COLLAR FOR GS5
HRP9529	BEARINGS AND COLLARS	RIELLO	3111108	RIELLO SEALED BEARING 6202-2RS

SEARCH CODE	PRODUCT TYPE	MFR	MANUFACTURER CODE	DESCRIPTION
HRP9595	BLAST TUBES & PIPES	RIELLO	3007502	RIELLO TUBE (G5BF)
HRP9600	BLAST TUBES & PIPES	RIELLO	3007815	RIELLO TUBE WAS 6913
HRP9594	BLAST TUBES & PIPES	RIELLO	3007498	RIELLO BLAST TUBE

SEARCH CODE	PRODUCT TYPE	MFR	MANUFACTURER CODE	DESCRIPTION
HRP9535	NIPPLES & CONES	RIELLO	3003873	RIELLO TEST NIPPLE
HRP9075	NIPPLES & CONES	GENERIC	N/A	NIPPLE 3/8M X 1/4M CONE
HRP9055	NIPPLES & CONES	GENERIC	N/A	NIPPLE 3/8M TAPER X 1/4M CONE
HRP9060	NIPPLES & CONES	GENERIC	N/A	NIPPLE 1/4M X 1/4M CONE

SEARCH CODE	PRODUCT TYPE	MFR	MANUFACTURER CODE	DESCRIPTION
HRP9081	PLUGS & COUPLINGS	NUWAY	C31040C	MZ/FZ CABLE/PLUG 0.5M
HRP9098	PLUGS & COUPLINGS	RIELLO	3000443	RIELLO COUPLING PK 10
HRP9133	PLUGS & COUPLINGS	RIELLO	3003758	RIELLO DRIVE/COUPLING (RL28/38) (3003758)
HRP9596	PLUGS & COUPLINGS	RIELLO	3007589	RIELLO 5 PIN MALE PLUG
HRP9064	PLUGS & COUPLINGS	RIELLO	20029299	RIELLO BY PASS PLUG - PK 5 - REPLACES 2623539

SEARCH CODE	PRODUCT TYPE	MFR	MANUFACTURER CODE	DESCRIPTION
HRP9106	VALVES, JACKS & RAMS	RIELLO	3003701	RIELLO HYDRAULIC RAM REPLACES 3005493
HRP9552	VALVES, JACKS & RAMS	RIELLO	3003903	RIELLO VALVE ASSEMBLY
HRP9557	VALVES, JACKS & RAMS	RIELLO	3007871	RIELLO NEEDLE VALVE REPLACES 3007582 RDB
HRP9563	VALVES, JACKS & RAMS	RIELLO	3020437	RIELLO NEEDLE VALVE REPLACES 3006925
HRP9585	VALVES, JACKS & RAMS	RIELLO	3006116	RIELLO VALVE
HRP9072	VALVES, JACKS & RAMS	RIELLO	3020444	RIELLO HYDRAULIC JACK LONG MECTRON R40 REPLACES 3006499
HRP9078	VALVES, JACKS & RAMS	RIELLO	3006911	RIELLO HYDRAULIC JACK (SHORT RAM) MECTRON

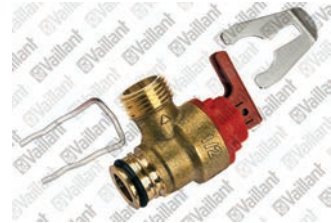
VAILLANT BOILER SPARES



0020059717
VAILLANT SENSOR (WATER PRESSURE)



0020038679
VAILLANT GASKET KIT



178985
PRESSURE RELIEF VALVE



190732
PRESSURE RELIEF VALVE



0020275015
PRESSURE RELIEF VALVE



0020132764
VAILLANT PRINTED CIRCUIT BOARD



0010028086
VAILLANT PRINTED CIRCUIT BOARD



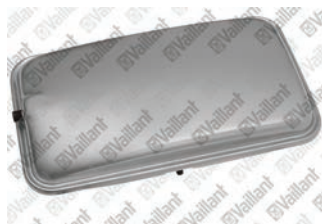
104521
VAILLANT AUTOMATIC DE-AERATOR



0020132682
VAILLANT BRASS DIVERTER VALVE WITH ADAPTOR



0020020015
VAILLANT PLASTIC DIVERTER VALVE



181051
VAILLANT EXPANSION VESSEL



981233
VAILLANT LIP SEAL EPDM

Over 50,000 spares in stock - go to www.hrptrade.co.uk to view our full profile and identify your spare part!

VAILLANT BOILER SPARES



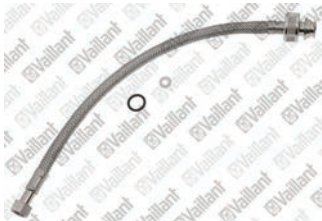
0020010295
VAILLANT VALVE



0020010291
SERVICE COCK



0020010292
VAILLANT HANDLE



0020010293
COLD WATER INLET VALVE



0020010294
VALVE



0010030632
PUMP



090709
VAILLANT IGNITION ELECTRODE



981227
VAILLANT SEALING RING EPDM (DN 80)



193583
SUPPORT - COMPLETE



080387
TUBE, FLEXIBLE



193592
NTC SENSOR - CENTRAL HEATING
FLOW/RETURN



0020133816
ELECTRODE

FRONT LINE BOILER SPARES
VAILLANT

Over 50,000 spares in stock - go to www.hrptrade.co.uk
to view our full profile and identify your spare part!

VAILLANT BOILER SPARES



0020074963

VAILLANT BUTTONS GREY KIT OF 3



0020048969

KNOBS GREY (PK3)



180985

SIPHONIC CONDENSATE TRAP



106563

SEAL



180984

CONDENSATE TRAP



0020148382

GAS SECTION



180982

PRESSURE GAUGE



0020213146

DIVERTER VALVE



178988

FLOW SENSOR COMPLETE - BLACK



0020068958

VAILLANT CONNECTION TUBE



0020068956

CONNECTION TUBE



252457

VAILLANT DIVERTER VALVE

Over 50,000 spares in stock - go to www.hrptrade.co.uk
to view our full profile and identify your spare part!

VAILLANT BOILER SPARES



061707
AUTOMATIC DE AERATOR



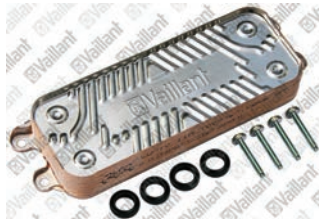
0020233502
VAILLANT PUMP



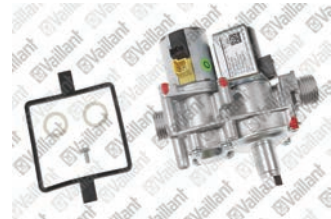
179030
VAILLANT FILTER



178969
SEALING RING



0020020018
HEAT EXCHANGER DHW, 11 (13) PLATES



0020148381
GAS SECTION WITH REGULATOR



0020036861
PRINTED CIRCUIT BOARD



065131
VAILLANT HEAT EXCHANGER DHW
(12 PLATES - 190MM)



178973
HEAT EXCHANGER DHW (20 PLATES)



130837
PRINTED CIRCUIT BOARD - MAIN



193593
FAN



076560
FLUE COLLECTOR CAP

FRONT LINE BOILER SPARES
VAILLANT

Over 50,000 spares in stock - go to www.hrptrade.co.uk
to view our full profile and identify your spare part!

BAXI BOILER SPARES



248056
BAXI SAFETY VALVE 3BAR



5114691
EXPANSION VESSEL 8L CIMM



5114692
EXPANSION VESSEL 10L CIMM



248000
WASHER (EXPANSION VESSEL)



5114762
TOP PIPE



5111137
DIAPHRAGM DIVERTOR VALVE REPAIR KIT



7216534
BAXI MOTOR BLACK / WHITE INC CLIP



248043
BAXI AIR VENT AUTOMATIC



5114725
BAXI NTC SENSOR



242489
BAXI COMB BOX DOOR SEAL SPARES



7656807
CARTRIDGE - 3 WAY ASSEMBLY
WITHOUT BYPASS



5114755
BAXI COMB. CHAMBER GASKET

Over 50,000 spares in stock - go to www.hrptrade.co.uk
to view our full profile and identify your spare part!

BAXI BOILER SPARES



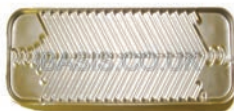
720222801
IGNITION ELECTRODE KIT



248049
BAXI GASKET PLATE HEAT EXCHANGER



5132097
ELECTRODE KIT



7223558
PLATE HEAT EX 20 PLATES KIT



247429
O-RING SEAL 22MM X 3MM - PRIMARY HEAT EXCHANGER



248021
O-RING SEAL 17.86MM X 2.62MM



5108265
BAXI TEMPERATURE SENSOR



720222901
BAXI KIT ELECTRODE IONISATION



7722642
PUMP



230955
BAXI SEAL FAN TO TURRET PF MK 2



5111714
BAXI CONDENSATE TRAP KIT SPARES



720878202
PCB

Over 50,000 spares in stock - go to www.hrptrade.co.uk to view our full profile and identify your spare part!

BAXI BOILER SPARES



7224764

BAXI VALVE 3 WAY OUTLET ASSEMBLY
WITHOUT BYPASS



238147

BAXI FAN OUTLET SEAL 60 DIA



248224

TAP - ISOLATION - FLOW



5111603

PRINTED CIRCUIT BOARD KIT



5118972

CONDENSATE PLUG ASSY



5130293

BAXI IGNITION/IONISATION



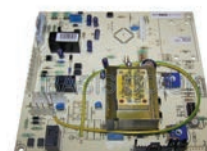
242459

BAXI FLOW SWITCH SPARES



7224342

PRESSURE DIFFERENTIAL ASSEMBLY



5112380

PRINTED CIRCUIT BOARD



720767301

BAXI SPARK ELECTRODE



5121447

FAN RG 128 UB



5113313

BAXI TAP ADAPTOR

Over 50,000 spares in stock - go to www.hrptrade.co.uk
to view our full profile and identify your spare part!



BAXI BOILER SPARES



5114748
BAXI PRESSURE SWITCH



5114767
BAXI SENSOR HALL EFFECT



720301001
GAS VALVE KIT



7225723
BAXI HEAT EXCHANGER
DHW (16 PLATES)



S62753
EXPANSION VESSEL



231711BAX
ELECTRONIC PRINTED CIRCUIT
BOARD KIT



7224344
HYDRAULIC OUTLET ASSEMBLY



407677
PCB



S54339
ELECTRODE C/W GASKET/SCREWS



720787801
SAFETY VALVE 3BAR



248069
GASKET - 10 X 14 X 2MM



S62733
BAXI GAUGE PRESSURE
C/W CAPILLARY

Over 50,000 spares in stock - go to www.hrptrade.co.uk
to view our full profile and identify your spare part!

WORCESTER BOILER SPARES



87161064330

BOSCH FLOW TURBINE ADAPTER



87161157540

BOSCH FLOW SENSOR ASSEMBLY



87161163810

BOSCH ELECTRODE KIT



87161064310

BOSCH PRESSURE RELIEF VALVE



87161063560

BOSCH SUPPLY MANIFOLD COMPLETE



87161065050

BOSCH TUBE - GAS SUPPLY



87161064420

MANIFOLD RETURN SUB ASSEMBLY
RIGHT HAND BLOCK



87161138330

BOSCH O-RING



87186643010

BOSCH SET OF ELECTRODES



87161055450

EXPANSION VESSEL



87161064450

AIR VENT



87161105340

BOSCH GASKET BURNER WB6

Over 50,000 spares in stock - go to www.hrptrade.co.uk
to view our full profile and identify your spare part!

WORCESTER BOILER SPARES



8716121817
SET OF ELECTRODES



87161211070
CHARGING LINK KEY



87101031530
SEALING HEAT EXCHANGER
FRONT PLATE SEAL



87161160670
FAN ASSEMBLY (BEFORE & INCL. FD 790
(BEFORE & INCL. OCT 2007)



87161064350
BOSCH SEAL 15MM



87161066850
HEAT EXCHANGER 16 PLATE DHW



8716118443
FAN ASSEMBLY (AFTER FD 891
(AFTER NOV 2008)



87161164280
BOSCH PRESSURE GAUGE
(PUSHFIT / CIRCLIP TYPE)



8716120409
PUMP



87161410570
BOSCH FLOW LIMITER INSERT 10LT



87186866210
BOSCH HINGE ASSEMBLY RH



87161068450
BOSCH DIVERTER VALVE ASSEMBLY

Over 50,000 spares in stock - go to www.hrptrade.co.uk
to view our full profile and identify your spare part!

WORCESTER BOILER SPARES



87186866190

BOSCH HINGE ASSEMBLY LH



87180069070

FIRESTOP PLATE C/W SCREWS



87110041680

BOSCH BURNER SEALING



87161066860

BOSCH HEAT EXCHANGER 12 PLATE



87155058830

BEARING PLATE



87155058250

BOSCH MEMBRANE



87161045910

BOSCH CHARGING KEY ASSEMBLY



87161068470

BOSCH DIVERTER VALVE
ASSEMBY MOTOR



87154072960

EXPANSION VESSEL



87161113250

BOSCH GAS VALVE SIT



87145000810

BOSCH DHW TEMPERATURE SENSOR



8716119824

PUMP DDPWM 15-60 230V
50HZ ASSEMBLY

FRONT LINE BOILER SPARES
WORCESTER BOSCH

Over 50,000 spares in stock - go to www.hrptrade.co.uk
to view our full profile and identify your spare part!

WORCESTER BOILER SPARES



87161155350

BOSCH WASHER SET-MOUNTING SET



87161064850

BOSCH SILENCER BODY



87161112530

PLUG



87186439890

BOSCH SAFETY VALVE



87161143890

FLUE SAMPLING TUBE KIT



87161405000

AUTOMATIC AIR VENT 3/8



87105062670

BOSCH TEMPERATURE LIMITER
ASSEMBLY



8716120416

PUMP



87161067390

BOSCH IGNITION LEAD



87161112520

BOSCH SAMPLE POINT CAP -
SCREW IN TYPE



87161165140

BOSCH FLUE TEST POINT PLUGS



871860028A0

ELECTRODE

Over 50,000 spares in stock - go to www.hrptrade.co.uk
to view our full profile and identify your spare part!

IDEAL BOILER SPARES



175591
IDEAL IGNITION ELECTRODE



175592
ELECTRODE - DETECTION



175593
IDEAL IGNITOR UNIT



175896
SUMP & COVER REPLACEMENT (XN,XO)



175572
GASKET - BURNER



175660
IDEAL FLOW TURBINE CART HE24



175661
IDEAL FLOW TURBINE CART HE30



175662
IDEAL FLOW TURBINE CART HE35



175413
IDEAL PRESSURE RELIEF VALVE KIT



177358
SUMP & COVER REPLACEMENT KIT



175668
IDEAL DIVERTER VALVE CARTRIDGE



175954
IDEAL SUMP CLEAN OUT COVER & GASKET (FROM XT)

Over 50,000 spares in stock - go to www.hrptrade.co.uk to view our full profile and identify your spare part!

IDEAL BOILER SPARES



171461

IDEAL FAN ASSEMBLY KIT CLASSIC



175551

IDEAL EXPANSION VESSEL KIT



173529

IDEAL FLAME SENSING ELECTRODE KIT



173528

IDEAL IGNITION ELECTRODE KIT - PRE XH



175590

FLOW SENSOR HALL EFFECT



176610

IDEAL PRV KIT



175569

FAN KIT



175576

IDEAL FLUE MANIFOLD



174813

DIVERTER VALVE HEAD



177540

IDEAL EXPANSION VESSEL KIT



174486

IDEAL PRINTED CIRCUIT BOARD PRIMARY CONTROL KIT



175981

FLUE MANIFOLD - HEAT

Over 50,000 spares in stock - go to www.hrptrade.co.uk to view our full profile and identify your spare part!

IDEAL BOILER SPARES



175679

IDEAL PRESSURE GAUGE KIT



175596

IDEAL WATER PRESSURE TRANSDUCER



179032IDE

IDEAL GAS VALVE KIT 24V



173538

IDEAL SPARK GENERATOR KIT



176473

IDEAL FLOW SENSOR/TURBINE KIT



177544

IDEAL GAS VALVE KIT



175562

GAS VALVE KIT



176207

IDEAL IGNITION ELECTRODE KIT



175598

IGNITION LEAD



173512

DETECTION LEAD



175583

IDEAL SIPHON TRAP KIT



176206

IDEAL ELECTRODE DETECTION KIT

Over 50,000 spares in stock - go to www.hrptrade.co.uk
to view our full profile and identify your spare part!



IDEAL BOILER SPARES



175579

FLUE MANIFOLD TOP-LOWER SEAL



176966

BURNER GASKET KIT



175620

IDEAL TURRET/MANIFOLD GASKET



175418

PLATE HEAT EXCHANGER KIT 30KW



175594

IDEAL THERMISTOR - NO FLOW



176432

CONTROL THERMISTOR - SINGLE UNIT



173511

IDEAL DETECTION LEAD - ICOS HE



057860

IDEAL BNR FLG GASKET SUPER 50KV



176550

DIVERTOR VALVE ASSY-GRUNDFOS



012589

IDEAL GASKET-CORK ROUND SUPER 3



173799

PRINTED CIRCUIT BOARD 25E



175571

BURNER KIT

Over 50,000 spares in stock - go to www.hrptrade.co.uk to view our full profile and identify your spare part!

GLOW-WORM BOILER SPARES



801635
SEAL HEAT EXCHANGER DOOR



0020047005
GLOW-WORM PRESSURE RELIEF VALVE 3BAR



0020020744
EXPANSION VESSEL 8L



2000802731
GLOW-WORM PRINTED CIRCUIT BOARD REPLACEMENT KIT



0020079644
GLOW-WORM SENSOR



0020097214
DIVERTER VALVE 3-WAY



S5720500
GLOW-WORM (WATER) PRESSURE SENSOR



0020020731
ELECTRODE



0020013711
SIPHON



0010030631
PUMP



2000802600
GLOW-WORM FILLING LOOP



S1007000
FILLING COCK

FRONT LINE BOILER SPARES
GLOW-WORM

Over 50,000 spares in stock - go to www.hrptrade.co.uk to view our full profile and identify your spare part!



GLOW-WORM BOILER SPARES



0020020718
FLUE DUCT FRONT ASSEMBLY



S5739800
TEMPERATURE SENSOR



0020057359
SIPHON ADAPTOR



0020097328
GLOW-WORM EXPANSION VESSEL 10L



0020023825
MAIN PCB



0020014161
GLOW-WORM AUTOMATIC AIR VENT



0020020721
GLOW-WORM GASKET
(FLUE HOOD FRONT)



0020118190
GLOW-WORM PRESSURE
RELIEF VALVE



0020020504
GLOW-WORM PACKING RING
EPDM (DN 60)



0020014168
DIVERTER VALVE



0020097207
GLOW-WORM SENSOR FLOW



0020020729
GLOW-WORM GASKET (BURNER)

FRONT LINE BOILER SPARES
GLOW-WORM

Over 50,000 spares in stock - go to www.hrptrade.co.uk
to view our full profile and identify your spare part!

GLOW-WORM BOILER SPARES



0020118196
GLOW-WORM DIVERTER VALVE



0020014402
HEAT EXCHANGER DHW (16 PLATES)



0020069021
GLOWWORM WATER PRESSURE SENSOR



S1006400
GLOW-WORM 3 WAY VALVE CARTRIDGE



S5720200
DHW FLOW SENSOR



S1020600
GLOW-WORM Z PIPE



801722
GLOW-WORM THERMISTOR THERMOMETRIC



801614
GLOW-WORM FLUE ADAPTOR



S1024500
GLOW-WORM AUTOMATIC DE-AERATOR



S1006900
SANITARY FILTER



S900847
PRINTED CIRCUIT BOARD (INC TPO 7 WIRE - 2 FUSE)



801645
GLOW-WORM FAN

FRONT LINE BOILER SPARES
GLOW-WORM

Over 50,000 spares in stock - go to www.hrptrade.co.uk to view our full profile and identify your spare part!

GLOW-WORM BOILER SPARES



S202626

GLOW-WORM ELECTRODE & LEAD



S5720600

MOTOR 3-WAY VALVE



0020152564

GLOW-WORM ELECTRODE (KIT)



0020195512

SAUNIER DUVAL GASKET; COMBUSTION CHAMBER COVER



0020195525

SAUNIER DUVAL ELECTRODE (IGNITION AND SENSING)



0020152565

GLOW-WORM ELECTRODE (KIT)



0020020749

TUBE - FLOW LINK



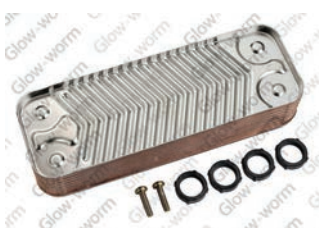
2000802664

GAS VALVE REPLACEMENT KIT



0020136541

GLOW-WORM HEAT EXCHANGER DHW



2000801831

PLATE TO PLATE - HEAT EXCHANGER



S227034

FAN



0020038076

FLUE SEAL

Over 50,000 spares in stock - go to www.hrptrade.co.uk to view our full profile and identify your spare part!

VAILLANT BOILERS

ECOFIT PURE COMBI PACKS

CODE	DESCRIPTION
HRP0010040018	ECOFIT PURE 825 PACK INCL ADVANCE FILTER & HORIZONTAL FLUE
HRP0010040019	ECOFIT PURE 830 PACK INCL ADVANCE FILTER & HORIZONTAL FLUE
HRP0010040020	ECOFIT PURE 835 PACK INCL ADVANCE FILTER & HORIZONTAL FLUE
HRP0010040021	ECOFIT PURE 825 PACK INCL ADVANCE FILTER & VERTICAL FLUE
HRP0010040022	ECOFIT PURE 830 PACK INCL ADVANCE FILTER & VERTICAL FLUE
HRP0010040023	ECOFIT PURE 835 PACK INCL ADVANCE FILTER & VERTICAL FLUE

ECOFIT PURE COMBI BOILERS

CODE	DESCRIPTION
HRP0010020389	VAILLANT ECOFIT PURE 825 COMBI BOILER
HRP0010020390	VAILLANT ECOFIT PURE 830 COMBI BOILER
HRP0010020391	VAILLANT ECOFIT PURE 835 COMBI BOILER

ECOTEC PRO COMBI BOILERS

CODE	DESCRIPTION
HRP0010021836	VAILLANT ECOTEC PRO 24KW COMBI BOILER
HRP0010021837	VAILLANT ECOTEC PRO 28KW COMBI BOILER
HRP0010021838	VAILLANT ECOTEC PRO 28KW COMBI LPG BOILER
HRP0010016538	VAILLANT ECOTEC PRO 30KW COMBI BOILER

ECOTEC PLUS COMBI BOILERS

CODE	DESCRIPTION
HRP0010021823	VAILLANT ECOTEC PLUS 825 COMBI BOILER
HRP0010021824	VAILLANT ECOTEC PLUS 832 COMBI BOILER
HRP0010021825	VAILLANT ECOTEC PLUS 832 COMBI LPG BOILER
HRP0010021822	VAILLANT ECOTEC PLUS 835 COMBI BOILER
HRP0010021826	VAILLANT ECOTEC PLUS 838 COMBI BOILER
HRP0010021827	VAILLANT ECOTEC PLUS 938 COMBI BOILER

ECOFIT PURE SYSTEM BOILERS

CODE	DESCRIPTION
HRP0010020396	VAILLANT ECOFIT PURE 615 SYSTEM BOILER
HRP0010020397	VAILLANT ECOFIT PURE 618 SYSTEM BOILER
HRP0010020398	VAILLANT ECOFIT PURE 625 SYSTEM BOILER
HRP0010020399	VAILLANT ECOFIT PURE 630 SYSTEM BOILER

ECOTEC PLUS SYSTEM BOILERS

CODE	DESCRIPTION
HRP0010021829	VAILLANT ECOTEC PLUS 615 SYSTEM BOILER
HRP0010021830	VAILLANT ECOTEC PLUS 618 SYSTEM BOILER
HRP0010021831	VAILLANT ECOTEC PLUS 618 LPG SYSTEM BOILER
HRP0010021832	VAILLANT ECOTEC PLUS 624 SYSTEM BOILER
HRP0010021833	VAILLANT ECOTEC PLUS 630 SYSTEM BOILER
HRP0010021834	VAILLANT ECOTEC PLUS 630 LPG SYSTEM BOILER
HRP0010021835	VAILLANT ECOTEC PLUS 637 SYSTEM BOILER

MANUFACTURER'S REBATES ARE NOT APPLICABLE TO BOILERS PURCHASED VIA HRP TRADE.

VAILLANT BOILERS

ECOFIT PURE OPEN VENTED BOILERS

CODE	DESCRIPTION
HRP0010020401	VAILLANT ECOFIT PURE 415 HEAT ONLY BOILER
HRP0010020402	VAILLANT ECOFIT PURE 418 HEAT ONLY BOILER
HRP0010020403	VAILLANT ECOFIT PURE 425 HEAT ONLY BOILER
HRP0010020404	VAILLANT ECOFIT PURE 430 HEAT ONLY BOILER
HRP0010020405	VAILLANT ECOFIT PURE 435 HEAT ONLY BOILER

ECOTEC PLUS OPEN VENTED BOILERS

CODE	DESCRIPTION
HRP0010021221	VAILLANT ECOTEC PLUS 415 HEAT ONLY BOILER
HRP0010021222	VAILLANT ECOTEC PLUS 418 HEAT ONLY BOILER
HRP0010021223	VAILLANT ECOTEC PLUS 424 HEAT ONLY BOILER
HRP0010021224	VAILLANT ECOTEC PLUS 430 HEAT ONLY BOILER
HRP0010015674	VAILLANT ECOTEC PLUS 435 HEAT ONLY BOILER

VAILLANT BOILER ACCESSORIES

CODE	DESCRIPTION
HRP0020219517	VAILLANT STANDARD HORIZONTAL FLUE KIT
HRP303933	VAILLANT SIMPLE FLUE
HRP0020219519	VAILLANT STANDARD HORIZONTAL FLUE KIT 1700MM
HRP0020228140	VAILLANT REAR FLUE KIT
HRP303902	VAILLANT 470MM EXTENSION
HRP303903	VAILLANT 1MTR EXTENSION
HRP303905	VAILLANT 2MTR EXTENSION
HRP303910	VAILLANT 90 ELBOW (X1)
HRP303911	VAILLANT 45 ELBOW (X2)
HRP303935	VAILLANT PIPE SUPPORT (X3)
HRP0020223472	VAILLANT VERTICAL FLUE TERMINAL
HRP009056	VAILLANT FLAT ROOF FLASHING
HRP009076	VAILLANT PITCHED ROOF FLASHING
HRP0020219529	VAILLANT PLUME KIT BLACK
HRP0020219539	VAILLANT PLUME 1MTR EXTENSION BLACK
HRP0020219543	VAILLANT PLUME 90 ELBOW BLACK (X1)
HRP0020219551	VAILLANT PLUME 45 ELBOW BLACK (X2)
HRP0020219530	VAILLANT PLUME KIT WHITE
HRP0020219540	VAILLANT PLUME 1MTR EXTENSION WHITE
HRP0020219544	VAILLANT PLUME 90 ELBOW WHITE (X1)
HRP0020219552	VAILLANT PLUME 45 ELBOW WHITE (X2)
HRP0020278309	VAILLANT 22MM FILTER BOILER PROTECTION KIT
HRP0020278310	VAILLANT 28MM FILTER BOILER PROTECTION KIT
HRP0020116882	VAILLANT MECHANICAL TIME CLOCK 150



BAXI & POTTERTON BOILERS

BAXI 200 SERIES COMBI BOILERS

CODE	DESCRIPTION
HRP7656160	BAXI 224 24KW COMBI BOILER
HRP7656161	BAXI 228 28KW COMBI BOILER

BAXI 400 SERIES COMBI BOILERS

CODE	DESCRIPTION
HRP7656162	BAXI 424 24KW COMBI BOILER
HRP7656163	BAXI 428 28KW COMBI BOILER
HRP7676760	BAXI 428 28KW COMBI BOILER LPG

BAXI 600 SERIES COMBI BOILERS

CODE	DESCRIPTION
HRP7682194	BAXI 624 24KW COMBI BOILER
HRP7703803	BAXI 624 24KW COMBI BOILER LPG
HRP7682101	BAXI 630 30KW COMBI BOILER
HRP7703804	BAXI 630 30KW COMBI BOILER LPG
HRP7691350	BAXI 636 36KW COMBI BOILER

BAXI 800 SERIES COMBI BOILERS

CODE	DESCRIPTION
HRP7732189	BAXI 825 25KW COMBI BOILER C/W ADEY MAGNACLEAN FILTER
HRP7731874	BAXI 830 30KW COMBI BOILER C/W ADEY MAGNACLEAN FILTER
HRP7731705	BAXI 836 36KW COMBI BOILER C/W ADEY MAGNACLEAN FILTER

POTTERTON TITANIUM COMBI BOILERS

CODE	DESCRIPTION
HRP7219493	POTTERTON TITANIUM 24KW COMBI BOILER
HRP7219494	POTTERTON TITANIUM 28KW COMBI BOILER
HRP7219495	POTTERTON TITANIUM 33KW COMBI BOILER
HRP7219496	POTTERTON TITANIUM 40KW COMBI BOILER

BAXI MEGAFLO SYSTEM BOILERS

CODE	DESCRIPTION
HRP7219444	BAXI MEGAFLO SYSTEM 15KW BOILER
HRP7219445	BAXI MEGAFLO SYSTEM 18KW BOILER
HRP7219446	BAXI MEGAFLO SYSTEM 24KW BOILER
HRP7219447	BAXI MEGAFLO SYSTEM 28KW BOILER
HRP7219448	BAXI MEGAFLO SYSTEM 32KW BOILER

BAXI & POTTERTON BOILERS

BAXI 400 SERIES SYSTEM BOILERS

CODE	DESCRIPTION
HRP7668933	BAXI 415 15KW HEAT ONLY BOILER
HRP7668934	BAXI 418 18KW HEAT ONLY BOILER
HRP7668935	BAXI 424 24KW HEAT ONLY BOILER

BAXI 600 SERIES SYSTEM BOILERS

CODE	DESCRIPTION
HRP7682196	BAXI 615 15KW SYSTEM BOILER
HRP7682197	BAXI 618 18KW SYSTEM BOILER
HRP7716061	BAXI 624 24KW SYSTEM BOILER
HRP7716065	BAXI 624 24KW SYSTEM BOILER LPG

BAXI 800 SERIES SYSTEM BOILERS

CODE	DESCRIPTION
HRP7728645	BAXI 818 18KW SYSTEM BOILER C/W ADEY MGNACLEAN FILTER
HRP7728289	BAXI 824 24KW SYSTEM BOILER C/W ADEY MGNACLEAN FILTER

POTTERTON TITANIUM OPEN VENTED BOILERS

CODE	DESCRIPTION
HRP7668920	POTTERTON TITANIUM 12KW HEAT ONLY BOILER
HRP7668922	POTTERTON TITANIUM 15KW HEAT ONLY BOILER
HRP7668923	POTTERTON TITANIUM 18KW HEAT ONLY BOILER
HRP7668924	POTTERTON TITANIUM 24KW HEAT ONLY BOILER
HRP7668925	POTTERTON TITANIUM 30KW HEAT ONLY BOILER

BAXI 600 SERIES OPEN VENTED BOILERS

CODE	DESCRIPTION
HRP7711998	BAXI 613 13KW HEAT ONLY BOILER
HRP7711999	BAXI 616 16KW HEAT ONLY BOILER
HRP7712020	BAXI 619 19KW HEAT ONLY BOILER
HRP7712022	BAXI 625 25KW HEAT ONLY BOILER
HRP7712023	BAXI 630 30KW HEAT ONLY BOILER

BAXI 800 SERIES OPEN VENTED BOILERS

CODE	DESCRIPTION
HRP7749866	BAXI 816 16KW HEAT ONLY BOILER
HRP7749868	BAXI 825 25KW HEAT ONLY BOILER
HRP7749869	BAXI 830 30KW HEAT ONLY BOILER



BAXI & POTTERTON BOILERS

BAXI AND POTTERTON ACCESSORIES

CODE	DESCRIPTION
HRP7222019	BAXI/ MAIN/ POTTERTON STANDARD HORIZ FLUE KIT C/W BEND - COMBI / SYSTEM
HRP7210434	BAXI REAR OUTLET FLUE KIT
HRP720599401	BAXI TELESCOPIC STANDARD FLUE KIT
HRP720648801	BAXI 1MTR EXTENSION
HRP720643001	BAXI 0.5MTR EXTENSION
HRP720648401	BAXI 90 ELBOW (X1)
HRP720647901	BAXI 135 ELBOW (X2)
HRP5111080	BAXI/ POTTERTON/ MAIN PIPE SUPPORT
HRP5118576	BAXI/ POTTERTON/ MAIN VERTICAL FLUE TERMINAL
HRP5122151	BAXI/ POTTERTON/ MAIN PITCHED ROOF FLASHING
HRP246144	BAXI/ POTTERTON/ MAIN FLAT ROOF FLASHING
HRP7225717	FLUE & PLUME DISPLACEMENT KIT INC ELBOW PLUS CLIPS WHITE
HRP720627001	PLUME KIT WHITE
HRP720643401	PLUME 1MT EXTENSION WHITE
HRP5121369	PLUME 90 ELBOW WHITE
HRP5121370	PLUME 135 ELBOW (PAIR) WHITE
HRP5111068	PLUME DEFLECTOR BLACK
HRP7225716	FLUE & PLUME DISPLACEMENT KIT INC ELBOW PLUS CLIPS BLACK
HRP720622901	PLUME KIT BLACK
HRP720643301	PLUME 1MT EXTENSION BLACK
HRP720648701	PLUME 90 ELBOW BLACK
HRP720648601	PLUME 135 ELBOW (PAIR) BLACK



WORCESTER BOSCH BOILERS

CDI COMPACT COMBI BOILERS

CODE	DESCRIPTION
HRP7733600054	WORCESTER GREENSTAR 28CDI COMPACT COMBI BOILER
HRP7733600055	WORCESTER GREENSTAR 32CDI COMPACT COMBI BOILER
HRP7733600056	WORCESTER GREENSTAR 36CDI COMPACT COMBI BOILER

2000 RANGE COMBI BOILERS

CODE	DESCRIPTION
HRP7736902099	WORCESTER GREENSTAR 2000 25KW COMBI BOILER
HRP7736902100	WORCESTER GREENSTAR 2000 30KW COMBI BOILER

4000 RANGE COMBI BOILERS

CODE	DESCRIPTION
HRP7733600371	WORCESTER GREENSTAR 4000 25KW COMBI BOILER
HRP7733600373	WORCESTER GREENSTAR 4000 30KW COMBI BOILER

8000 LIFE COMBI BOILERS

CODE	DESCRIPTION
HRP7738100800	WORCESTER GREENSTAR 8000 LIFE 30KW COMBI BOILER
HRP7738100801	WORCESTER GREENSTAR 8000 LIFE 35KW COMBI BOILER
HRP7738100802	WORCESTER GREENSTAR 8000 LIFE 40KW COMBI BOILER
HRP7738100803	WORCESTER GREENSTAR 8000 LIFE 45KW COMBI BOILER
HRP7738100804	WORCESTER GREENSTAR 8000 LIFE 50KW COMBI BOILER

8000 STYLE COMBI BOILERS

CODE	DESCRIPTION
HRP7738100795	WORCESTER GREENSTAR 8000 STYLE 30KW COMBI BOILER
HRP7738100796	WORCESTER GREENSTAR 8000 STYLE 35KW COMBI BOILER
HRP7738100797	WORCESTER GREENSTAR 8000 STYLE 40KW COMBI BOILER
HRP7738100798	WORCESTER GREENSTAR 8000 STYLE 45KW COMBI BOILER
HRP7738100799	WORCESTER GREENSTAR 8000 STYLE 50KW COMBI BOILER

4000 RANGE SYSTEM BOILERS

CODE	DESCRIPTION
HRP7733600379	WORCESTER GREENSTAR 4000 15KW SYSTEM BOILER
HRP7733600381	WORCESTER GREENSTAR 4000 18KW SYSTEM BOILER
HRP7733600383	WORCESTER GREENSTAR 4000 21KW SYSTEM BOILER
HRP7733600385	WORCESTER GREENSTAR 4000 24KW SYSTEM BOILER



WORCESTER BOSCH BOILERS

8000 LIFE SYSTEM BOILERS

CODE	DESCRIPTION
HRP7738100807	WORCESTER GREENSTAR 8000 LIFE 30KW SYSTEM BOILER
HRP7738100808	WORCESTER GREENSTAR 8000 LIFE 35KW SYSTEM BOILER
HRP7738100805	WORCESTER GREENSTAR 8000 STYLE 30KW SYSTEM BOILER
HRP7738100806	WORCESTER GREENSTAR 8000 STYLE 35KW SYSTEM BOILER

RI SERIES OPEN VENTED BOILERS

CODE	DESCRIPTION
HRP7733600308	WORCESTER GREENSTAR 15RI HEAT ONLY BOILER
HRP7733600309	WORCESTER GREENSTAR 18RI HEAT ONLY BOILER
HRP7733600310	WORCESTER GREENSTAR 21RI HEAT ONLY BOILER
HRP7733600311	WORCESTER GREENSTAR 24RI HEAT ONLY BOILER
HRP7733600064	WORCESTER GREENSTAR 27RI COMPACT HEAT ONLY BOILER
HRP7733600066	WORCESTER GREENSTAR 30RI COMPACT HEAT ONLY BOILER

8000 LIFE OPEN VENTED BOILERS

CODE	DESCRIPTION
HRP7738100809	WORCESTER GREENSTAR 8000 LIFE 30KW HEAT ONLY BOILER
HRP7738100810	WORCESTER GREENSTAR 8000 LIFE 35KW HEAT ONLY BOILER
HRP7738100811	WORCESTER GREENSTAR 8000 LIFE 40KW HEAT ONLY BOILER
HRP7738100812	WORCESTER GREENSTAR 8000 LIFE 45KW HEAT ONLY BOILER
HRP7738100813	WORCESTER GREENSTAR 8000 LIFE 50KW HEAT ONLY BOILER

WORCESTER BOSCH ACCESSORIES

CODE	DESCRIPTION
HRP7716191082	WORCESTER STANDARD HORIZONTAL FLUE KIT
HRP7716191171	WORCESTER LONG HORIZONTAL FLUE KIT
HRP7716191083	WORCESTER 1MTR EXTENSION
HRP7716191172	WORCESTER 2MTR EXTENSION
HRP7716191084	WORCESTER 90 ELBOW (X1)
HRP7716191085	WORCESTER 45 ELBOW (X2)
HRP7716191178	WORCESTER SUPPORT BRACKET (X6)
HRP7719002430	WORCESTER VERTICAL FLUE TERMINAL
HRP7719002432	WORCESTER VERTICAL FLUE ADAPTOR
HRP7716191091	WORCESTER PITCHED ROOF FLASHING
HRP7716191090	WORCESTER FLAT ROOF FLASHING
HRP7716191086	WORCESTER PLUME KIT
HRP7716191087	WORCESTER PLUME 1MTR EXTENSION
HRP7716191088	WORCESTER PLUME 90 ELBOW (X1)
HRP7716191089	WORCESTER PLUME 45 ELBOW (X2)
HRP7716192610	WORCESTER KEYLESS FILLING LINK
HRP7733600236	WORCESTER 22MM GREENSTAR SYSTEM FILTER
HRP7733600237	WORCESTER 28MM GREENSTAR SYSTEM FILTER

IDEAL BOILERS

ATLANTIC COMBI BOILERS

CODE	DESCRIPTION
HRP223491	IDEAL ATLANTIC 24KW COMBI BOILER, FLUE AND CLOCK
HRP223492	IDEAL ATLANTIC 30KW COMBI BOILER, FLUE AND CLOCK
HRP223493	IDEAL ATLANTIC 35KW COMBI BOILER, FLUE AND CLOCK

INDEPENDENT COMBI BOILERS

CODE	DESCRIPTION
HRP215434	IDEAL INDEPENDENT 24KW COMBI BOILER & CLOCK
HRP215435	IDEAL INDEPENDENT 30KW COMBI BOILER & CLOCK
HRP215436	IDEAL INDEPENDENT 35KW COMBI BOILER & CLOCK
HRP215431	IDEAL INDEPENDENT PLUS 24KW COMBI BOILER & CLOCK
HRP215432	IDEAL INDEPENDENT PLUS 30KW COMBI BOILER & CLOCK
HRP215433	IDEAL INDEPENDENT PLUS 35KW COMBI BOILER & CLOCK

LOGIC COMBI BOILERS

CODE	DESCRIPTION
HRP215439	IDEAL LOGIC+ 24KW COMBI BOILER
HRP215440	IDEAL LOGIC+ 30KW COMBI BOILER
HRP215441	IDEAL LOGIC+ 35KW COMBI BOILER
HRP218872	IDEAL LOGIC MAX 24KW COMBI BOILER
HRP218873	IDEAL LOGIC MAX 30KW COMBI BOILER
HRP218874	IDEAL LOGIC MAX 35KW COMBI BOILER

VOGUE COMBI BOILERS

CODE	DESCRIPTION
HRP216358	IDEAL VOGUE 26KW COMBI BOILER
HRP216359	IDEAL VOGUE 32KW COMBI BOILER
HRP216360	IDEAL VOGUE 40KW COMBI BOILER
HRP218856	IDEAL VOGUE MAX 26KW COMBI BOILER
HRP218857	IDEAL VOGUE MAX 32KW COMBI BOILER
HRP218858	IDEAL VOGUE MAX 40KW COMBI BOILER

LOGIC OPEN VENTED BOILERS

CODE	DESCRIPTION
HRP215402	IDEAL NEW LOGIC+ 15KW HEAT ONLY BOILER
HRP215403	IDEAL NEW LOGIC+ 18KW HEAT ONLY BOILER
HRP215404	IDEAL NEW LOGIC+ 24KW HEAT ONLY BOILER
HRP215405	IDEAL NEW LOGIC+ 30KW HEAT ONLY BOILER
HRP218864	IDEAL LOGIC MAX 15KW HEAT ONLY BOILER
HRP218865	IDEAL LOGIC MAX 18KW HEAT ONLY BOILER
HRP218866	IDEAL LOGIC MAX 24KW HEAT ONLY BOILER
HRP218867	IDEAL LOGIC MAX 30KW HEAT ONLY BOILER

IDEAL BOILERS

INDEPENDENT SYSTEM BOILERS

CODE	DESCRIPTION
HRP215672	IDEAL INDEPENDENT 15KW SYSTEM BOILER
HRP215673	IDEAL INDEPENDENT 18KW SYSTEM BOILER
HRP215674	IDEAL INDEPENDENT 24KW SYSTEM BOILER
HRP215675	IDEAL INDEPENDENT 30KW SYSTEM BOILER

LOGIC SYSTEM BOILERS

CODE	DESCRIPTION
HRP215677	IDEAL LOGIC+ 15KW SYSTEM BOILER
HRP215678	IDEAL LOGIC+ 18KW SYSTEM BOILER
HRP215679	IDEAL LOGIC+ 24KW SYSTEM BOILER
HRP215680	IDEAL LOGIC+ 30KW SYSTEM BOILER
HRP218868	IDEAL LOGIC MAX 15KW SYSTEM BOILER
HRP218869	IDEAL LOGIC MAX 18KW SYSTEM BOILER
HRP218870	IDEAL LOGIC MAX 24KW SYSTEM BOILER
HRP218871	IDEAL LOGIC MAX 30KW SYSTEM BOILER

VOGUE SYSTEM BOILERS

CODE	DESCRIPTION
HRP216354	IDEAL VOGUE 15KW SYSTEM BOILER
HRP216355	IDEAL VOGUE 18KW SYSTEM BOILER
HRP216356	IDEAL VOGUE 26KW SYSTEM BOILER
HRP216357	IDEAL VOGUE 32KW SYSTEM BOILER
HRP218859	IDEAL VOGUE MAX 15KW SYSTEM BOILER
HRP218860	IDEAL VOGUE MAX 18KW SYSTEM BOILER
HRP218861	IDEAL VOGUE MAX 26KW SYSTEM BOILER
HRP218862	IDEAL VOGUE MAX 32KW SYSTEM BOILER

IDEAL ACCESSORIES

CODE	DESCRIPTION
HRP208171	IDEAL LOGIC STANDARD HORIZONTAL FLUE KIT
HRP208172	IDEAL INDEPENDENT STANDARD HORIZONTAL FLUE KIT
HRP208174	IDEAL LOGIC / INDEPENDENT HORIZONTAL FLUE KIT 1000MM
HRP205990	IDEAL LOGIC+ HEAT ONLY REAR OUTLET FLUE KIT
HRP211037	IDEAL 0.5MTR EXTENSION
HRP203129	IDEAL 1MTR EXTENSION
HRP211038	IDEAL 2MTR EXTENSION
HRP203130	IDEAL 90 ELBOW (X1)
HRP203131	IDEAL 45 ELBOW (X2)

CODE	DESCRIPTION
HRP205247	IDEAL PIPE SUPPORT
HRP211039	IDEAL VERTICAL FLUE TERMINAL (INC VERT CONN)
HRP152258	IDEAL PITCHED ROOF FLASHING
HRP152259	IDEAL FLAT ROOF FLASHING
HRP208175	IDEAL VERTICAL FLUE CONNECTOR
HRP208178	IDEAL PLUME KIT
HRP205989	IDEAL LOGIC REAR FLUE AND PLUME KIT
HRP203228	IDEAL PLUME 1MTR EXTENSION
HRP203229	IDEAL PLUME 90 ELBOW (X1)
HRP203230	IDEAL PLUME 135 ELBOW (X2)
HRP217528	IDEAL 22MM SYSTEM FILTER

GLOWWORM BOILERS

ENERGY COMBI BOILERS

CODE	DESCRIPTION
HRP0010035896	GLOW-WORM ENERGY7 25C COMBI BOILER ONLY
HRP0010035897	GLOW-WORM ENERGY7 30C COMBI BOILER ONLY
HRP0010035898	GLOW-WORM ENERGY7 35C COMBI BOILER ONLY
HRP0010040024	GLOW-WORM ENERGY7 25C, STD FLUE, 22MM POWER FILTER
HRP0010040025	GLOW-WORM ENERGY7 30C, STD FLUE, 22MM POWER FILTER
HRP0010040026	GLOW-WORM ENERGY7 35C, STD FLUE, 22MM POWER FILTER
HRP0010040027	GLOW-WORM ENERGY7 25C, VERT FLUE, ADAP, POWER FILTER
HRP0010040028	GLOW-WORM ENERGY7 30C, VERT FLUE, ADAP, POWER FILTER
HRP0010040029	GLOW-WORM ENERGY7 35C, VERT FLUE, ADAP, POWER FILTER
HRP0010028635	GLOW-WORM ENERGY 30C COMBI LPG INC STD FLUE
HRP0010030436	GLOW-WORM ENERGY 30C COMBI LPG INC REAR FLUE
HRP0010031996	GLOW-WORM ENERGY 30C COMBI LPG INC VERTICAL FLUE

COMPACT COMBI BOILERS

CODE	DESCRIPTION
HRP0010043988	GLOW WORM COMPACT 24C C/W HORIZONTAL FLUE
HRP0010043989	GLOW WORM COMPACT 28C C/W HORIZONTAL FLUE
HRP0010043992	GLOW WORM COMPACT 24C C/W VERTICAL FLUE
HRP0010043993	GLOW WORM COMPACT 28C C/W VERTICAL FLUE
HRP0010043990	GLOW WORM COMPACT 24C LPG C/W HORIZONTAL FLUE
HRP0010043991	GLOW WORM COMPACT 28C LPG C/W HORIZONTAL FLUE
HRP0010043994	GLOW WORM COMPACT 24C LPG C/W VERTICAL FLUE
HRP0010043995	GLOW WORM COMPACT 28C LPG C/W VERTICAL FLUE

ENERGY SYSTEM BOILERS

CODE	DESCRIPTION
HRP0010035899	GLOW-WORM ENERGY7 12S SYSTEM BOILER ONLY
HRP0010035900	GLOW-WORM ENERGY7 15S SYSTEM BOILER ONLY
HRP0010035901	GLOW-WORM ENERGY7 18S SYSTEM BOILER ONLY
HRP0010035902	GLOW-WORM ENERGY7 25S SYSTEM BOILER ONLY
HRP0010035903	GLOW-WORM ENERGY7 30S SYSTEM BOILER ONLY

ENERGY OPEN VENTED BOILERS

CODE	DESCRIPTION
HRP0010035904	GLOW-WORM ENERGY7 12R REGULAR BOILER ONLY
HRP0010035905	GLOW-WORM ENERGY7 15R REGULAR BOILER ONLY
HRP0010035906	GLOW-WORM ENERGY7 18R REGULAR BOILER ONLY
HRP0010035907	GLOW-WORM ENERGY7 25R REGULAR BOILER ONLY
HRP0010035908	GLOW-WORM ENERGY7 30R REGULAR BOILER ONLY



GLOWWORM BOILERS

GLOWWORM ACCESSORIES

CODE	DESCRIPTION
HRP0010035820	GLOW-WORM POWER SYSTEM FILTER
HRP0010031041	GLOW-WORM STANDARD HORIZONTAL FLUE KIT
HRP0010031043	GLOW-WORM TELESCOPIC HORIZONTAL FLUE KIT
HRP0010031044	GLOW-WORM 1.7MTR FLUE
HRP0020219526	GLOW-WORM DIRECT REAR OUTLET FLUE KIT
HRP0020230604	GLOW-WORM VERTICAL FLUE TERMINAL
HRP0020257015	GLOW-WORM ENERGY VERTICAL FLUE ADAPTOR
HRP0020258676	GLOW-WORM PITCHED ROOF FLASHING
HRP0020199443	GLOW-WORM FLAT ROOF FLASHING
HRP0020257007	GLOW-WORM EXTENSION 0.5M DN60/100 PP
HRP0020257008	GLOW-WORM EXTENSION 1M DN60/100 PP
HRP0020257445	GLOW-WORM EXTENSION 2M DN60/100 PP
HRP0020257009	GLOW-WORM ELBOW 87 DEG DN60/100 PP
HRP0020257010	GLOW-WORM ELBOW 45 DEG DN60/100 PP (PAIR)
HRP0020219531	GLOW-WORM BOILER PLUME MANAGEMENT KIT (BLACK)
HRP0020219541	GLOW-WORM 1 METRE BLACK PLUME EXTENSION
HRP0020219545	GLOW-WORM 90 DEGREE BLACK PLUME BEND
HRP0020219553	GLOW-WORM PAIR OF 45 DEGREE BLACK PLUME BENDS
HRP0020219532	GLOW-WORM BOILER PLUME MANAGEMENT KIT (WHITE)
HRP0020219542	GLOW-WORM 1 METRE WHITE PLUME EXTENSION
HRP0020219550	GLOW-WORM 90 DEGREE WHITE PLUME BEND
HRP0020219554	GLOW-WORM PAIR OF 45 DEGREE WHITE PLUME BENDS
HRP0020193660	GLOW-WORM SPACING FRAME FOR ENERGY COMBI & SYSTEM
HRP0020193661	GLOW-WORM ENERGY MECHANICAL TIMER FOR COMBI & SYS
HRP0020267923	GLOW-WORM FLUE SUPPORT CLIPS 200MM DN60/100 PP PK5
HRP0020267924	GLOW-WORM FLUE SUPPORT CLIPS 100MM (PK OF 3)

VOKERA BOILERS & GAS FIRED WATER HEATER

EASI-HEAT COMBI BOILERS

CODE	DESCRIPTION
HRP20116906	VOKERA EASI-HEAT 25C COMBI BOILER, FLUE, CLEANER & INHIBITOR
HRP20116910	VOKERA EASI-HEAT 29C COMBI BOILER, FLUE, CLEANER & INHIBITOR
HRP20153964	VOKERA EASI-HEAT 32C COMBI BOILER, FLUE, CLEANER & INHIBITOR

EASI-HEAT SYSTEM BOILERS

CODE	DESCRIPTION
HRP20136547	VOKERA EASI-HEAT 24S SYSTEM BOILER, FLUE, CLEANER & INHIBITOR
HRP20136551	VOKERA EASI-HEAT 30S SYSTEM BOILER, FLUE, CLEANER & INHIBITOR

EASI-HEAT OPEN VENTED BOILERS

CODE	DESCRIPTION
HRP20144036	VOKERA EASI-HEAT 18VHE BOILER, FLUE, CLEANER & INHIBITOR

EASI-FLO GAS FIRED WATER HEATER

CODE	DESCRIPTION
HRP20143494	VOKERA EASI-FLO PLUS WATER HEATER C/W FLUE

EHS BOILERS

EHS ELECTRIC BOILERS

CODE	DESCRIPTION
HRPEHS12SPC	EHS ELECTRIC COMBI 12KW BOILER
HRPEHS15SPC	EHS ELECTRIC COMBI 14.4KW BOILER



RETURNS FORM

Please complete **ALL** sections below. Completed forms should be emailed to returns@hrptrade.co.uk and a returns reference will be supplied with instructions of how to return the part(s). Any incomplete forms will be refused including any parts sent back without a returns reference being obtained first. Full details of our returns procedure can be found on our website.

IF YOU HAVE MULTIPLE PARTS TO RETURN ON MULTIPLE INVOICE NUMBERS THEN A FORM NEEDS TO BE COMPLETED FOR EACH INVOICE

Company Name: _____

Contact Name: _____

HRP Trade Invoice Number: _____

HRP Trade Order Number: _____

Customer Returns Reference: _____

If an item is being returned under warranty/alleged faulty the following three questions must be answered.

1. Date supplied to your customer: _____

2. Date returned by your customer: _____

3. Faulty out of the box: YES / NO

PART NUMBER	FAULTY/DELIVERY ERROR/NOT REQUIRED	FAULT DESCRIPTION



RETURN ADDRESS:

HRP TRADE - Unit 1 Lonebarn Link, Springfield Business Park, Chelmsford, Essex, CM2 5AR



RETURNS PROCEDURE

GOODS NOT REQUIRED:

- Goods must be in A1 resalable/unused/unopened condition and the supplier packaging must not be defaced in any way.
- Goods can only be returned if purchased within the last 30 days from **HRP TRADE**.
- Goods not meeting this requirement will be returned, possibly incurring a carriage charge.
- Goods must be listed as an 'in stock' item on our website – specials are non-returnable.
- PCB's and any gas carrying or gas controlling parts are non-returnable.
- A returns form will need to be completed and emailed to returns@hrptrade.co.uk to obtain a returns reference.
- Once approved, you will be supplied a returns reference and be advised of any restocking charges.
- Goods must be packaged sufficiently to ensure safe arrival with the returns reference included on the returning paperwork.
- It is the responsibility of all merchants to return unwanted goods back to **HRP TRADE** at their own expense.
- Once inspected and approved a credit will be raised on your account.

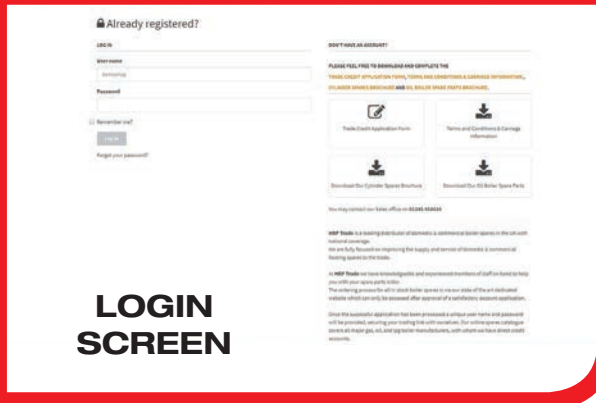
FAULTY GOODS:

- Items alleged faulty must be returned within 12 months of their original order date.
- A returns form will need to be completed and emailed to returns@hrptrade.co.uk to obtain a returns reference.
- Once approved, you will be supplied a returns reference and instructions on returning the goods.
- Goods must be packaged sufficiently to ensure safe arrival with the returns reference included on the returning paperwork.
- Once received back, the alleged faulty goods will be returned to the manufacturer for testing.
- Based on the manufacturer findings, a credit will be raised on your account or if goods are proven not to be faulty they will be returned back to you, possibly incurring a carriage charge.
- If replacement goods are required, a new order must be raised.

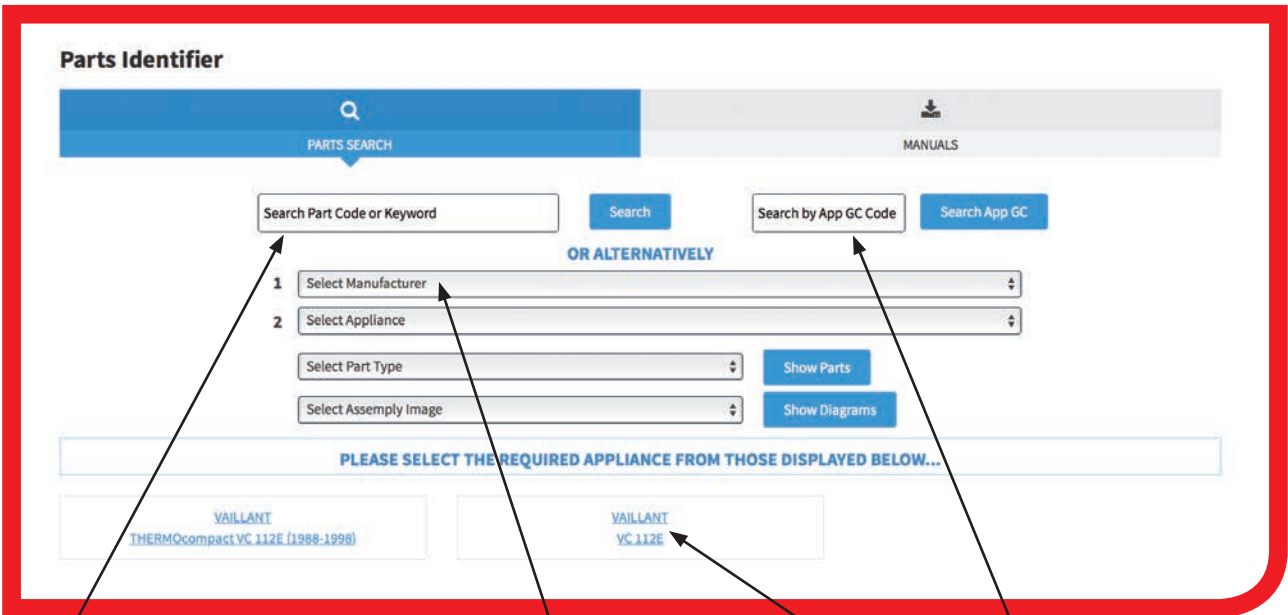
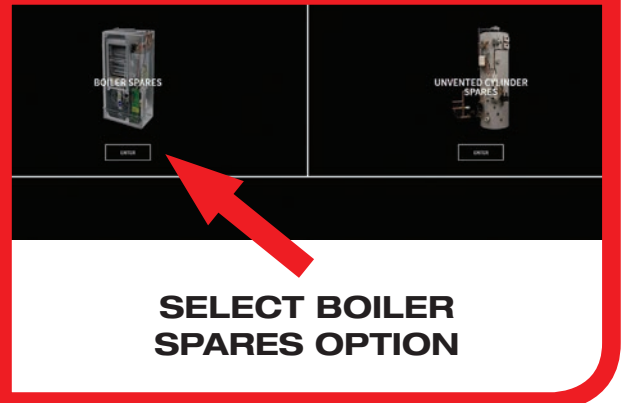


HRP TRADE PARTS IDENTIFIER STEP BY STEP GUIDE

STEP ONE



STEP TWO



SEARCH OPTION 1

Insert relevant part number and click search to locate part.

OR

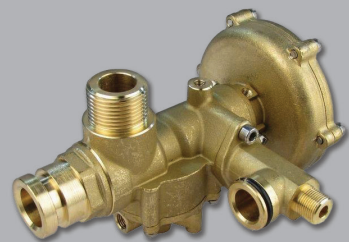
SEARCH OPTION 2

Insert the manufacturer name, followed by the appliance type. Then drill down via a specific part type or diagram look-up.

OR

SEARCH OPTION 3

Insert a GC code and then select the relevant boiler model from those provided. Then drill down to find a specific part via the part type or diagram look-up.



HRP TRADE

Unit 1 Lonebarn Link, Springfield Business Park,
Chelmsford, Essex, CM2 5AR